



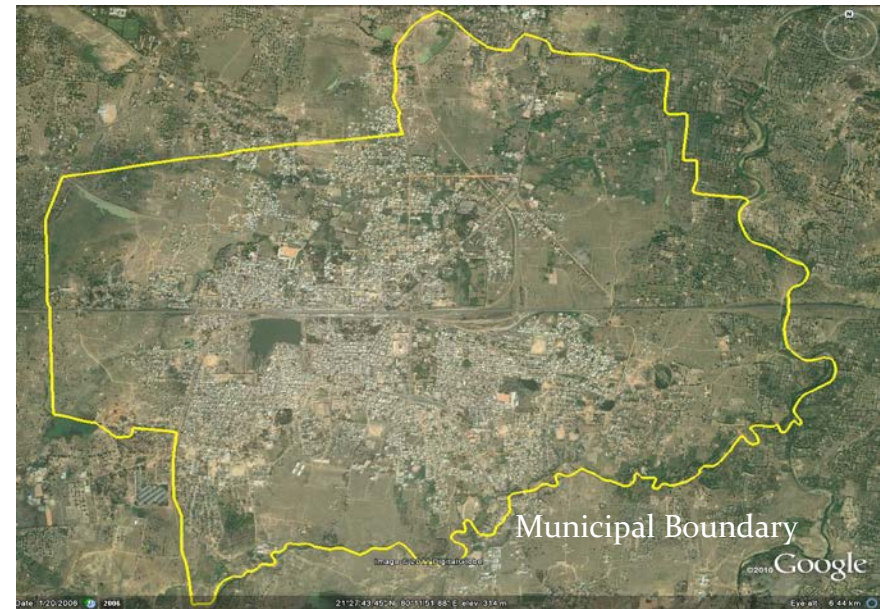
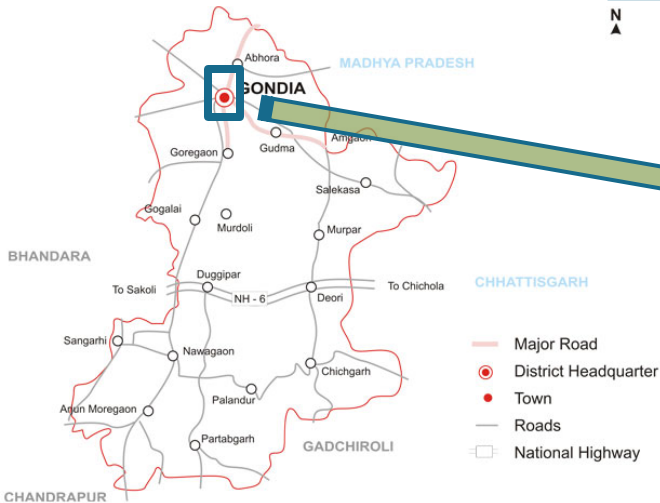
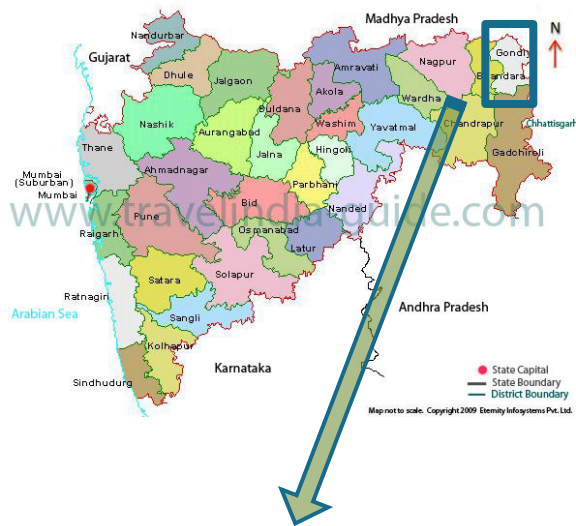
# FIELD ASSESSMENT FOR PERFORMANCE IMPROVEMENT PLAN

# Structure of Presentation

- **City Profile**
  - **Slum Profile**
  - **Organization Chart**
  - **Water Supply**
    - Water supply Indicators
    - Existing Water supply system
    - Issues
    - Action Areas for Water supply
    - Prioritization of Action Areas
  - **Waste Water**
    - Waste Water indicators
    - Existing Waste water system
    - Toilet Status in Slums
    - Outcomes of discussions
    - Action areas for Waste Water
    - Prioritization of Action Areas
- **SWM**
    - SWM Indicators
    - Existing Solid Waste Management
    - Private Sector Participation
    - Outcomes of discussions
    - Action Areas for SWM
    - Prioritization of Action Areas
  - **Property Tax**
    - Property Tax Billing Cycle
    - Demand & Collection
  - **Finance**
  - **Summary of PIP Actions**

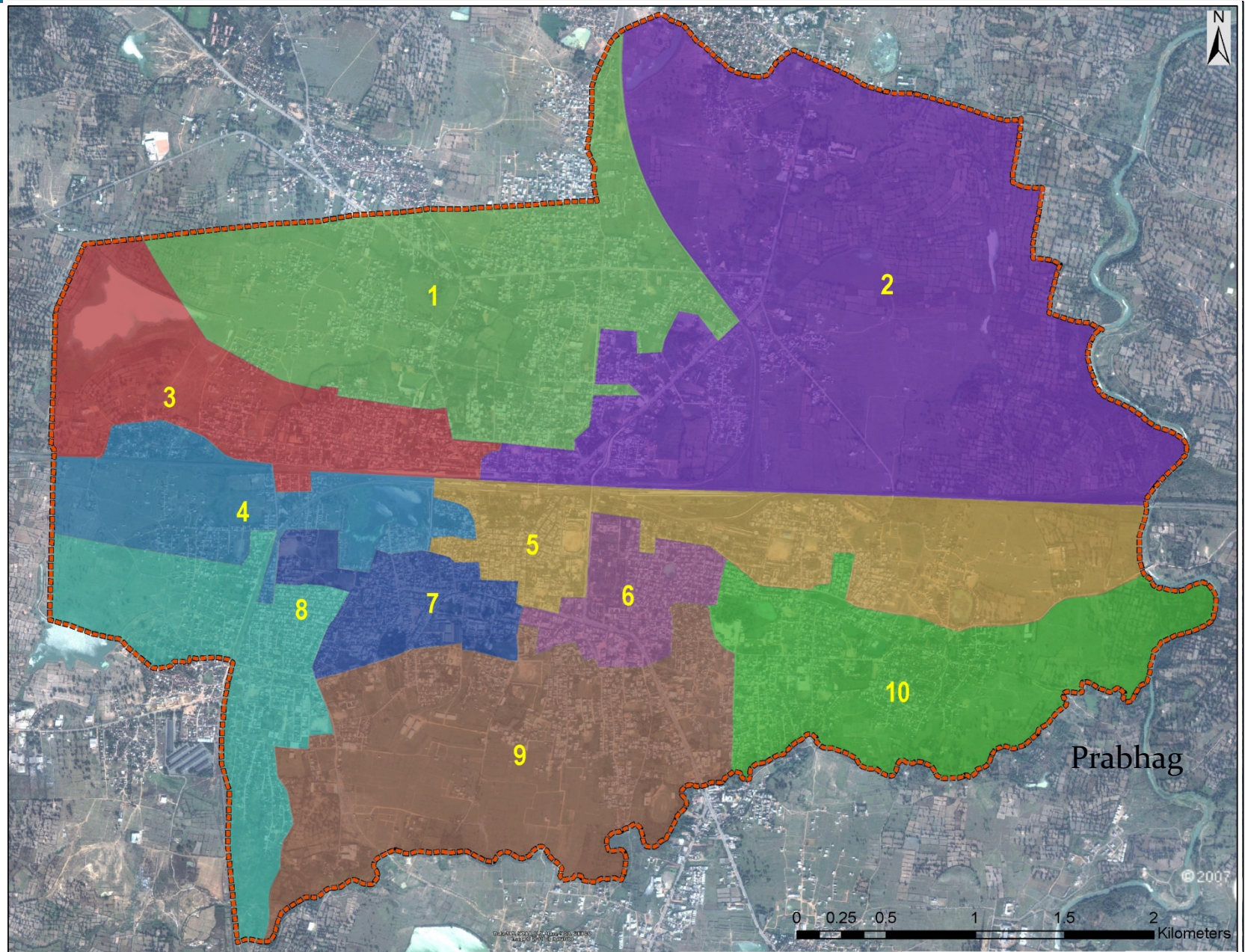
# City Profile

- The main economic base of the city is Rice mills, Bidi manufacturing, Sawmills
- Gondia Municipal Council is 'A' class Municipal Council. It was established in the year 1919. As on today the general body of the M.C. consists of 44 councilors
- There are 6 subject committees as detailed below to look after day-to-day working of the council and a standing committee to co-ordinate the working of subject committees.
  - 1) Public works Committee
  - 2) Education Committee
  - 3) Planning and Development Committee
  - 4) Women & Children Welfare Committee
  - 5) Water Supply & Drainage Committee
  - 6) Sanitation, Medical & Public Health Committee





# City Profile





# City Profile

## Demographic Profile



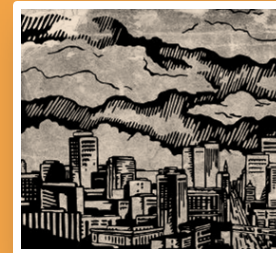
**Population**  
132889  
(2010-11)



**Total No. of HH's**  
28195  
(2010-11)



**Total Properties** 36577  
(2010-11)



**Area** 18 sq.km & 40  
Wards  
(2011)

## Water Supply



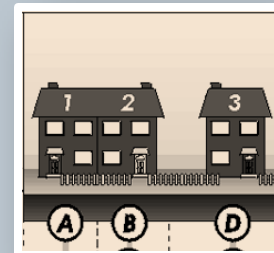
**Source of water**  
Surface Water



**Total Supply**  
11 MLD Surface Water

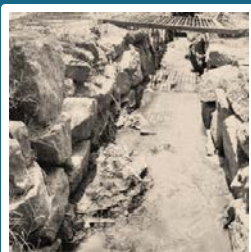


**Total Connections**  
10954  
(2010-11)



**HH Coverage**  
39.4 %  
(2010-11)

## Sanitation



**Open Surface Drain**



**Disposal of Night Soil-  
Septic tank**



**27720 Properties**  
have access to Toilets



**Coverage of Toilets**  
75.8%



# Slum Profile



Total No. of Slums 58  
nos  
(2010-11)

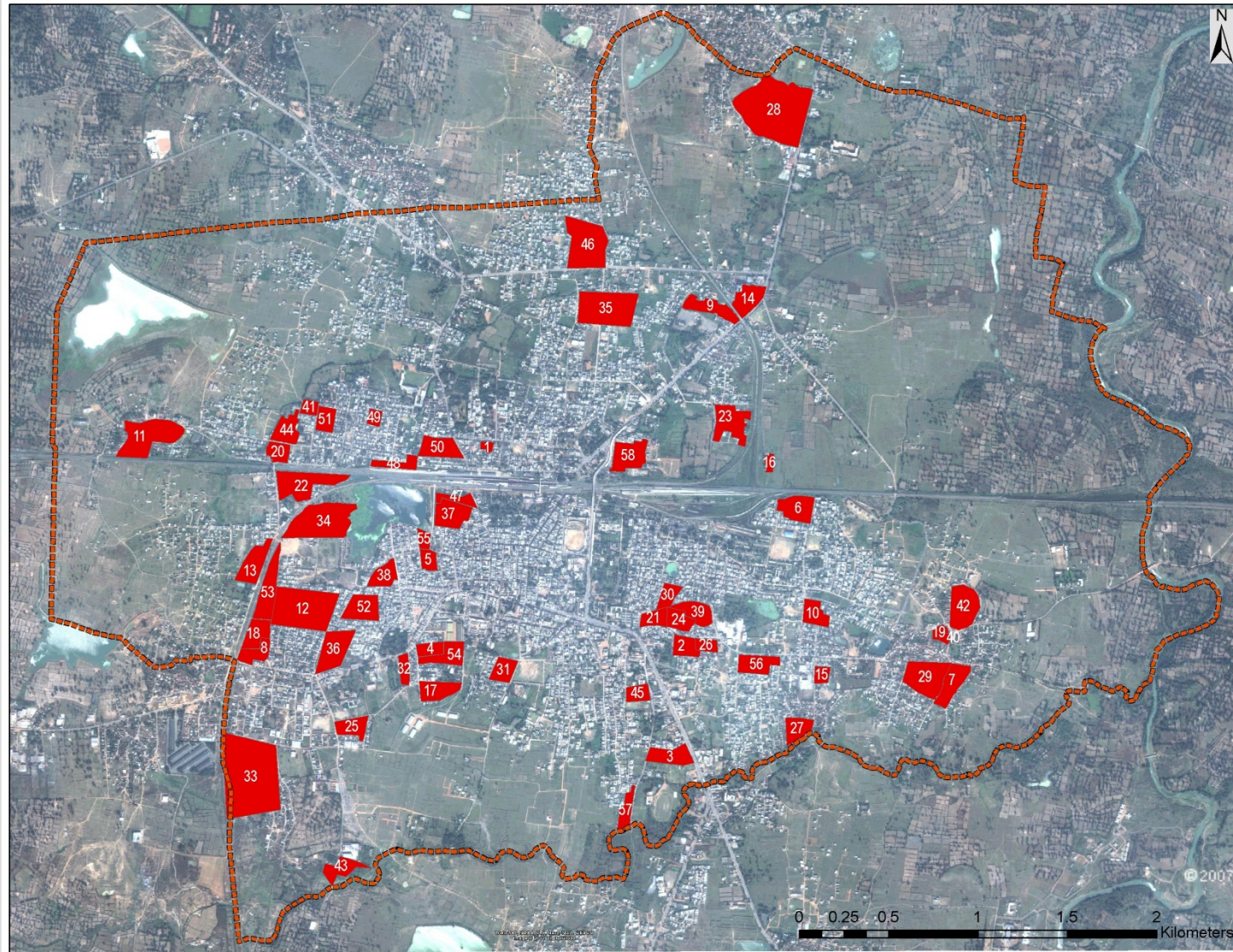


Slum Population  
45137  
(2010-11)



No. of Slum  
Households  
8100  
(2010-11)

Profile

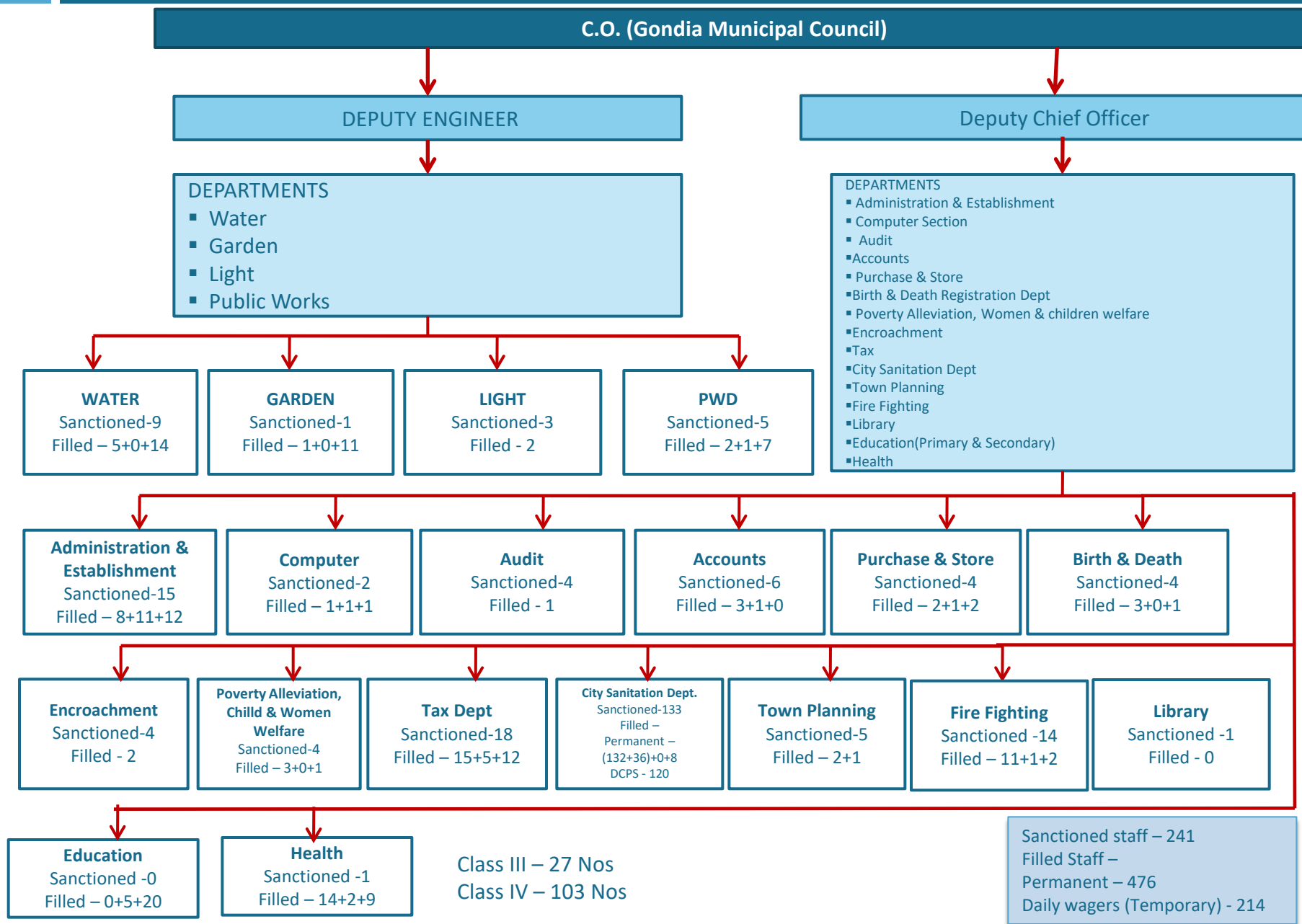




# Situation in Slums



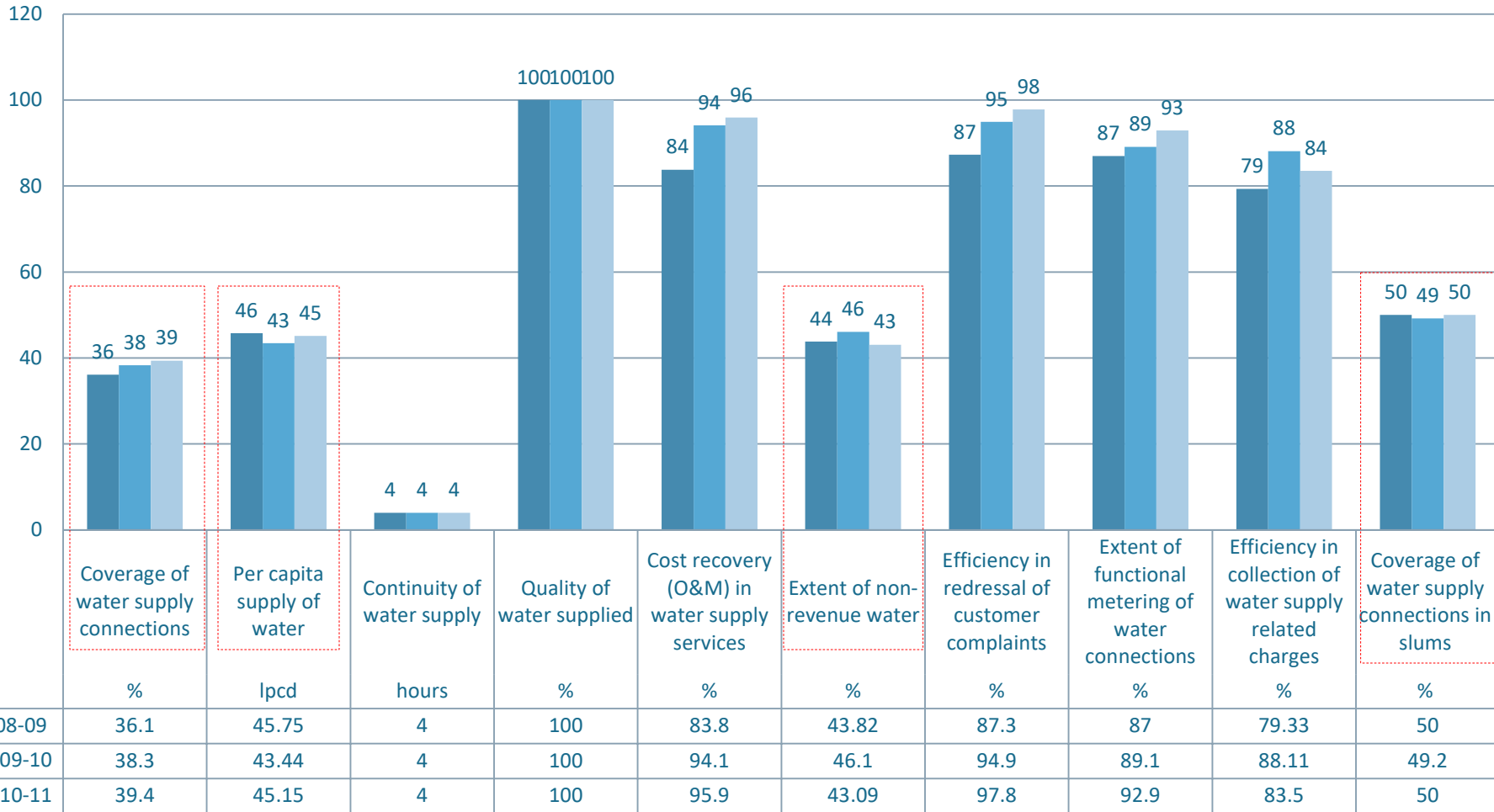
# Organization Chart





# Water Supply -KPIs

WATER SUPPLY INDICATORS



# Existing Water Supply System -MJP

## Source

- Wain Ganga river – 11 MLD
- New augmentation of Gondia water supply scheme is under construction under UIDSSMT project

## Treatment

- Kudwa Water Treatment Plant of 12 MLD, presently treating 10 MLD of water

## Transmission

- Present network length is 135 kms , and covered only 60% area.

## Storage

There are 2 ESR :

- Rail toly Gondia of 18 ML capacity
- Ganj Ward Gondia of 18 ML capacity

## Distribution

- 100% metering of all water connections

- Presently 60% of the area is covered with Distribution network

- Presently there are 10,800 nos of water connections

- 253 stand posts are maintained by MJP for the whole city

- Existing MJP unaccounted for water is 35%

- Water and Energy Audit is under preparatory stage



# Water Supply- Schematic Diagram

**System Loss: 3.9 MLD**

Source: 11 MLD

Treated water: 10 MLD

Water supplied at WDS: 9 MLD

Consumer end: 7.1 MLD

Wain Ganga  
River

11 MLD

1.0 MLD

Kudwa WTP

10 MLD

1.0 MLD

ESR

9 MLD

Rail toly gondia

Ganj Ward Gondia

1.9  
MLD

Billed metered  
consumption:  
**5.7 MLD**

Unbilled authorized  
consumption:  
**MLD**

Billed unmetered  
consumption:  
**1.2 MLD**

Unauthorized use:  
**0.16 MLD**



Water supplied through 52 Pump houses  
& more than 600 Hand pumps



Almost Every HH's has a private bore well  
for water

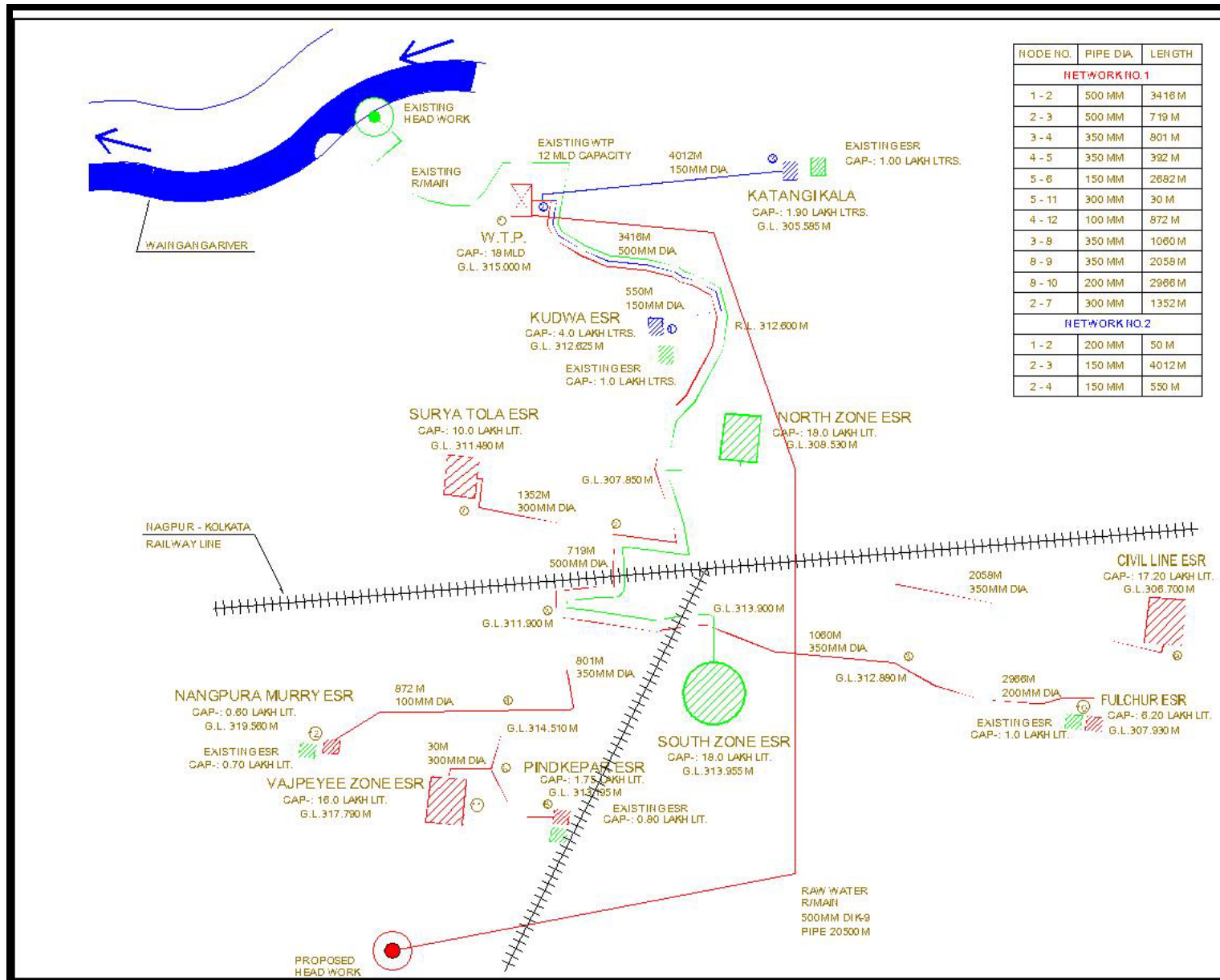
**Free Water:**

Avg. expenditure in 2007-08 to 2010-11 is 75 lakh per annum

GMC paid Rs 3 lakh per month to MJP for stand post.

**No Estimates available for water quantity**

# Water Supply Key Plan





# Water Supply Scheme under UISSMT

- The total cost of this water supply scheme is Rs. 6138.27 lakhs.

Share	Sanctioned Amount (Rs. In lakhs)	Actual Utilization as Dec 2010 (Rs. In lakhs)	% funds Utilized
UIDSSMT fund utilized	6138.27	16.39	59.34%

- The indicators that will impact through these project are:

Coverage of water supply connections	Coverage of water supply connections in slum households	Per Capita supply of water	Continuity of water supply	Extent of non revenue water	Extent of functional metering of water connections	Quality of water supplied	Efficiency in redressal of customer complaints	Efficiency in collection of water supply related charges	Cost recovery in water supply services

# Water supply Scheme under UISSMT

The total cost of this water supply scheme is Rs. 6138.27 lakhs

The Project components are:

Sr.No	Components
1	Raw water pumping machinery 3 sets 240 BHP water lubricated VT pumps
2	Mortar lining to existing rising main 450 mm dia
3	Raw water rising 500 mm dia DI K-9 16250 mt long
4	Water treatment plant of 18.0 MLD capacity
5	Pure water pumping machinery 3 sets, 75 BHP from WTP to MBR
6	Pure water rising main 300 to 450 mm dia. DI- K9
7	MBR capacity 740000 litres 25 m staging height
8	Pure water gravity mains 700mm to 300mm dia DI- K7 pipe length 9829m
9	Pure water pumping machinery 2 sets, 50 BHP for online boosting arrangement to vajpayee ward ESR
10	RCC ESR's Civil lines cap 21.35 lakhs St. Ht. 21 mt
11	RCC ESR's Vajpayee cap 19.50 lakhs St. Ht. 16 mt
12	RCC ESR's Suryatola cap 12.90 lakhs St. Ht. 18 mt
13	Distribution system 150 mm to 450 mm dia DI K-7 . Length 260.1 Km
14	Miscellaneous work – SCADA SYSTEM for 24 x 7 & Repairs to existing structures
15	Land acquisition
16	Charges payable to MSEDCL for power connection

# Situation of Water Supply



No. of open wells : 60



No. of Hand pumps: 610

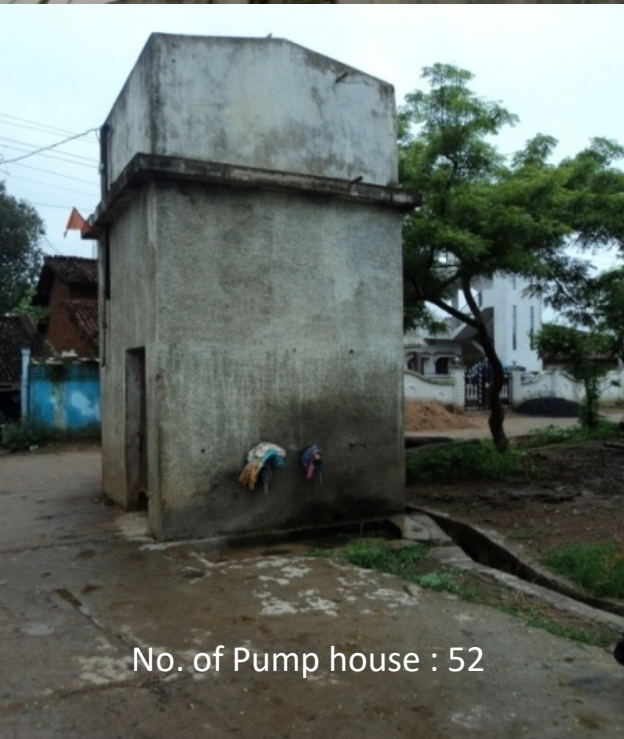


No. of MJP Stand posts : 90





# Situation of Water Supply



No. of Pump house : 52



No. of Connection :  
10800 nos



# Issues in Water Supply

- **Coverage of water supply connections is only 36 %**
  - Total Number of HH's in the city is 31382 nos
  - Total Number of Connections provided by MJP in city are 10,800 nos



## **What we found in the city:**

- In all **14,000 connections** were **given by MJP**, but as **on present only 10,800 connections** are there. Because **MJP disconnected** the rest of **the connections** as they **weren't paying the due amounts** otherwise the coverage could have been 47%
- Other than the MJP water supply, **Gondia Municipality** is also **supplying water through 52 pump houses** to the consumers and there are **more than 600 hand pumps** managed by Gondia Municipality
- Other than the MJP supply of water and the water provided by Gondia municipality, almost **every house in the ULB area** has a **private bore**, because **water is available at a very low depth** and the **cost of constructing the bore is also not very high**.

- **Per capita supply of water is only 45.75 lpcd**
  - Total volume of water billed is 6.16 MLD
  - Population served is 130492

## **What we found in the city:**

- This **10 MLD water** is **supplied only by MJP**, but other than MJP water **Gondia Municipality** is also **supplying water through 52 pump houses** to the consumers and there are more than **600 hand pumps** managed by Gondia Municipality
- Other than the MJP supply of water and the water provided by Gondia municipality, almost **every house in the ULB area** has a **private bore**, because **water is available at a very low depth** and the **cost of constructing the bore is also not very high**.



# Actual Water Supplied

SOURCES OF WATER AND POPULATION SERVED				
Details	No. of sources	Water supply (MLD)	No. of HH's served per source	No. of Population
52 no. of 5000 litre per pump house operated 4 times in a day	52	1.04	40	10400
Open wells (Extracting 200 litre per family)	60	0.24	20	6000
MJP Stand post (Extracting 200 litre per family)	90	0.36	20	9000
hand pump (Extracting 200 litre per family)	610	1.464	12	36600
Surface water	1	7	10954	54770
RAILWAY - ( Deduct population as not supplied by MJP)				3000
Total		10		116770

DETAILS	
Total LPCD at consumer end	87
Total Population of city	132889
Total Population un-served by MJP & Other sources of water	16119
No. of HH's Unserved by MJP & Other sources of water	3224



# Issues in Water Supply

- Efficiency in collection of water supply related charges

## What we found in the city

- The **ULB does not charge any amount** to the people residing in the ULB area, **even though Gondia Municipality** is also **supplying water** through 52 pump houses to the consumers and there are more than 600 hand pumps managed by Gondia Municipality
- Out of **253 stand posts** which are **operated by MJP** only **90 are there**, rest all are demolished because the **Nagar parishad is not able to pay the amount**. **At present** with this 90 stand posts **ULB pay Rs. 3 lakh per month**.
- The **Gondia Municipality pumps operate for 8 hours per day**.
- **Electricity bill** for the **pump house** is **paid by ULB** and there is no revenue generated against this expenditure

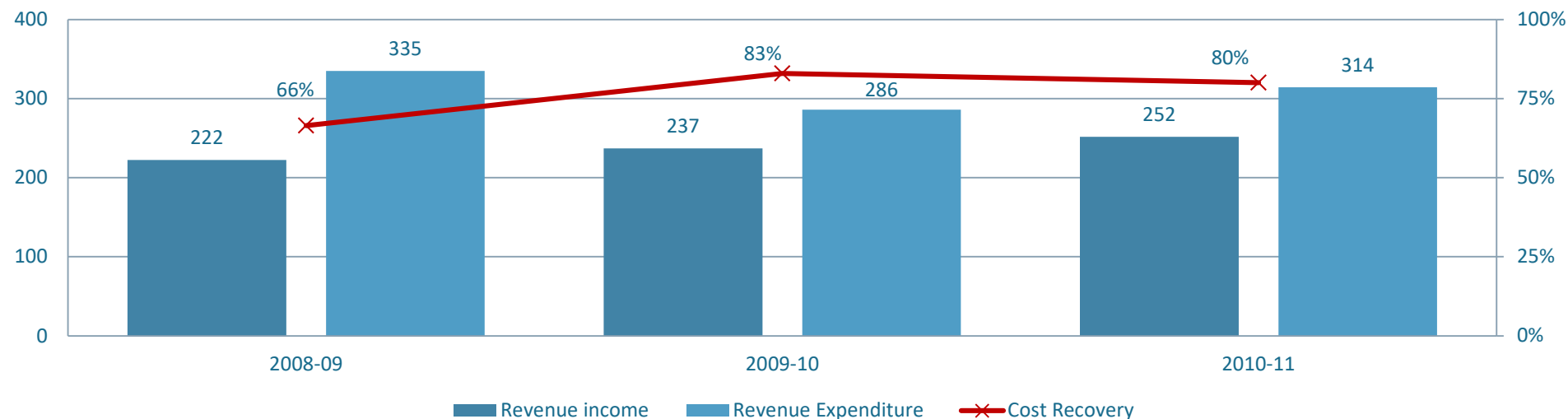
## Issue :

- **NO revenue generated by ULB against all this expenses** they are incurring for supply water to the People in ULB.

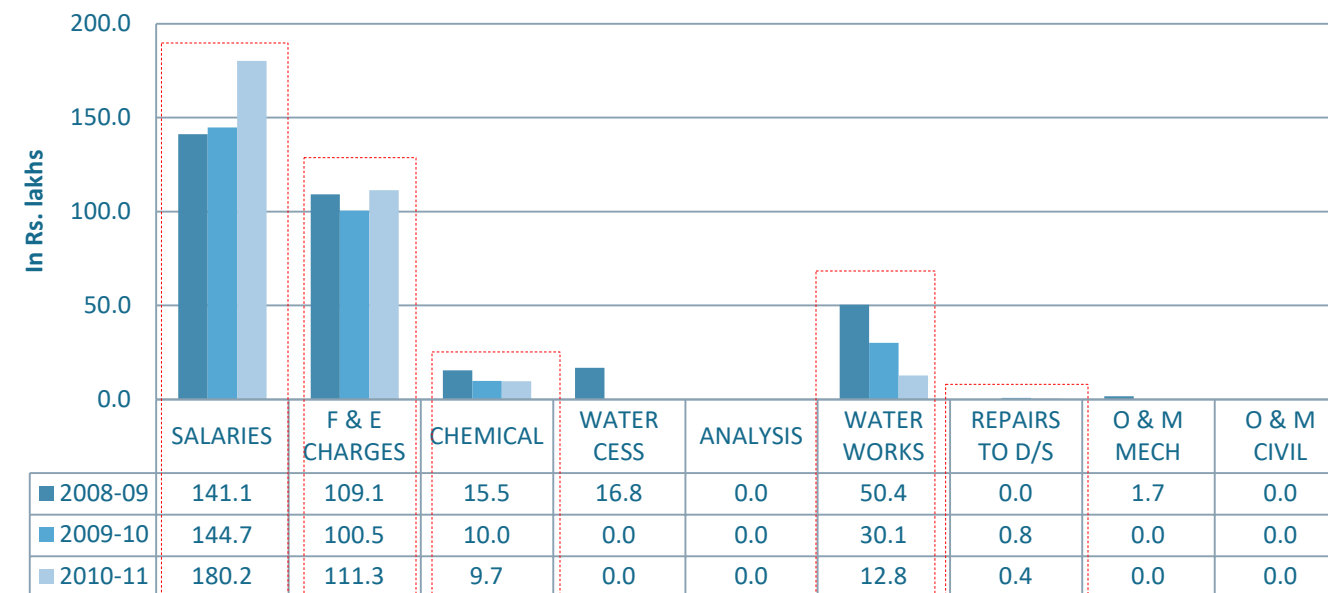


# Finance - MJP

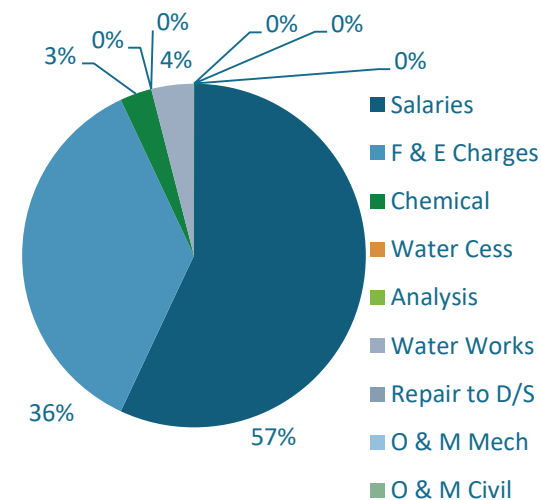
Revenue v/s Expenditure (In Rs. Lakhs)



Revenue Expenditure in Water supply

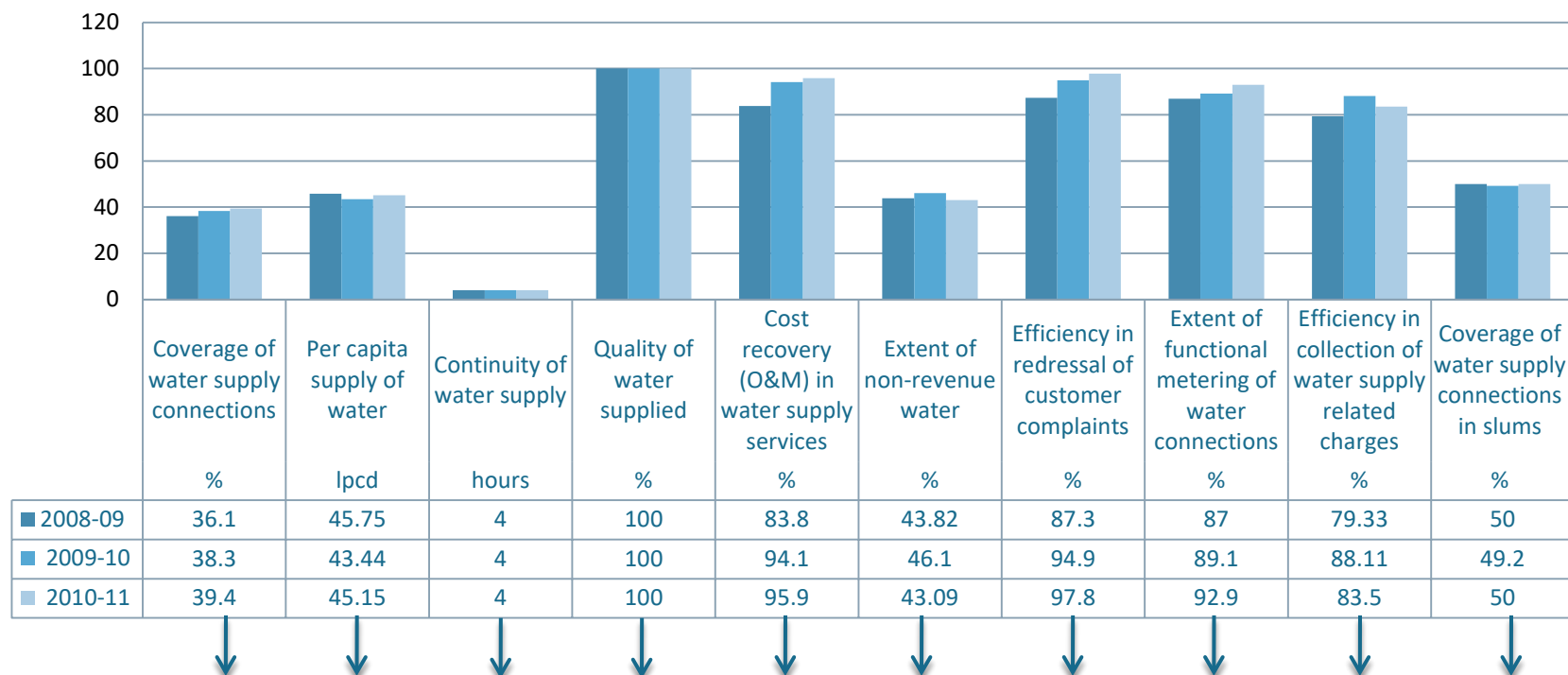


Expenditure Breakuup- 2010-11



# Action Area in Water Supply

WATER SUPPLY INDICATORS



## Areas of Processes And Policy Measures

Policy for giving individual water connections in slums

Policy for limiting the use of Ground Water

Policy for discontinuing Hand pumps, Pump houses and stand posts

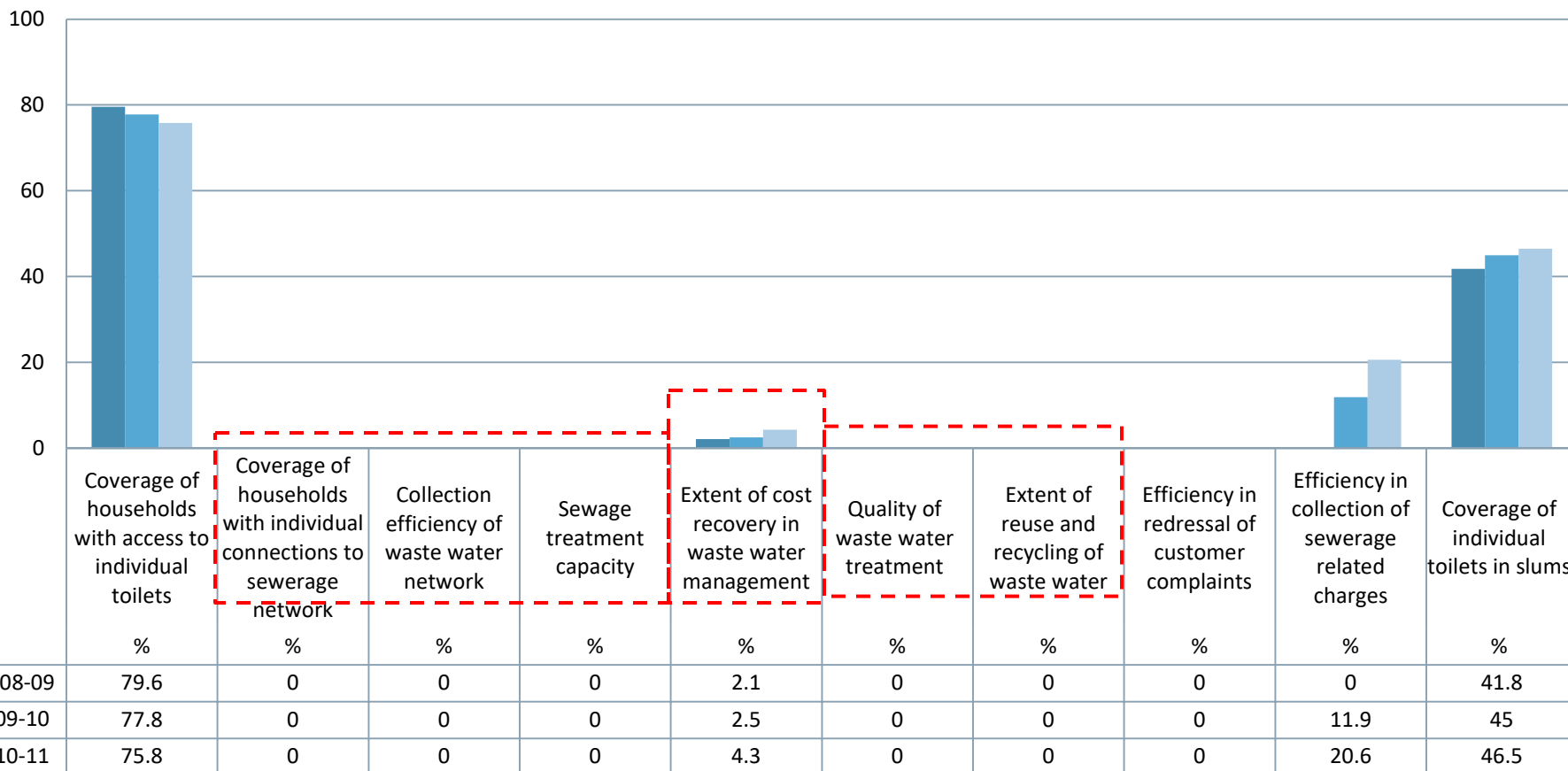


# Prioritization of Action Area in Water Supply

	AREA OF MINIMAL CAPITAL INVESTMENT	AREAS OF SUBSTANTIAL CAPITAL INVESTMENT	AREAS OF PROCESS & POLICY MEASURES
PRIORITY 1 (P1)	Additional connections using existing network	-	Policy for limiting the use of Ground Water
	Reduction in free water		Policy for discontinuing Hand pumps, Pump houses and stand posts
	Improvement in collection efficiency	-	-
PRIORITY 2 (P2)	-	Additional connections by expanding distribution network	Policy for giving individual water connections in slums

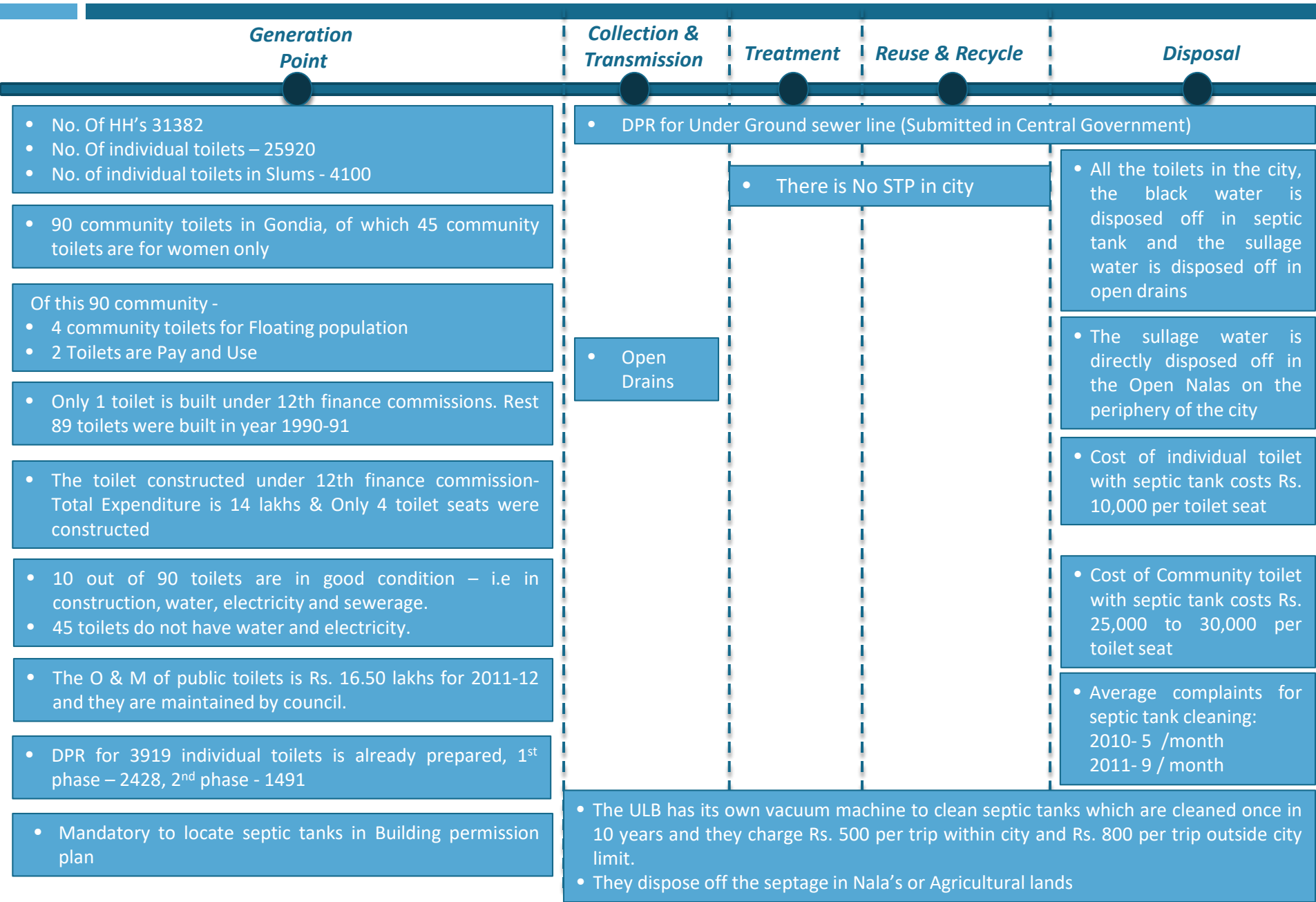
# Wastewater Indicators

Wastewater Indicators



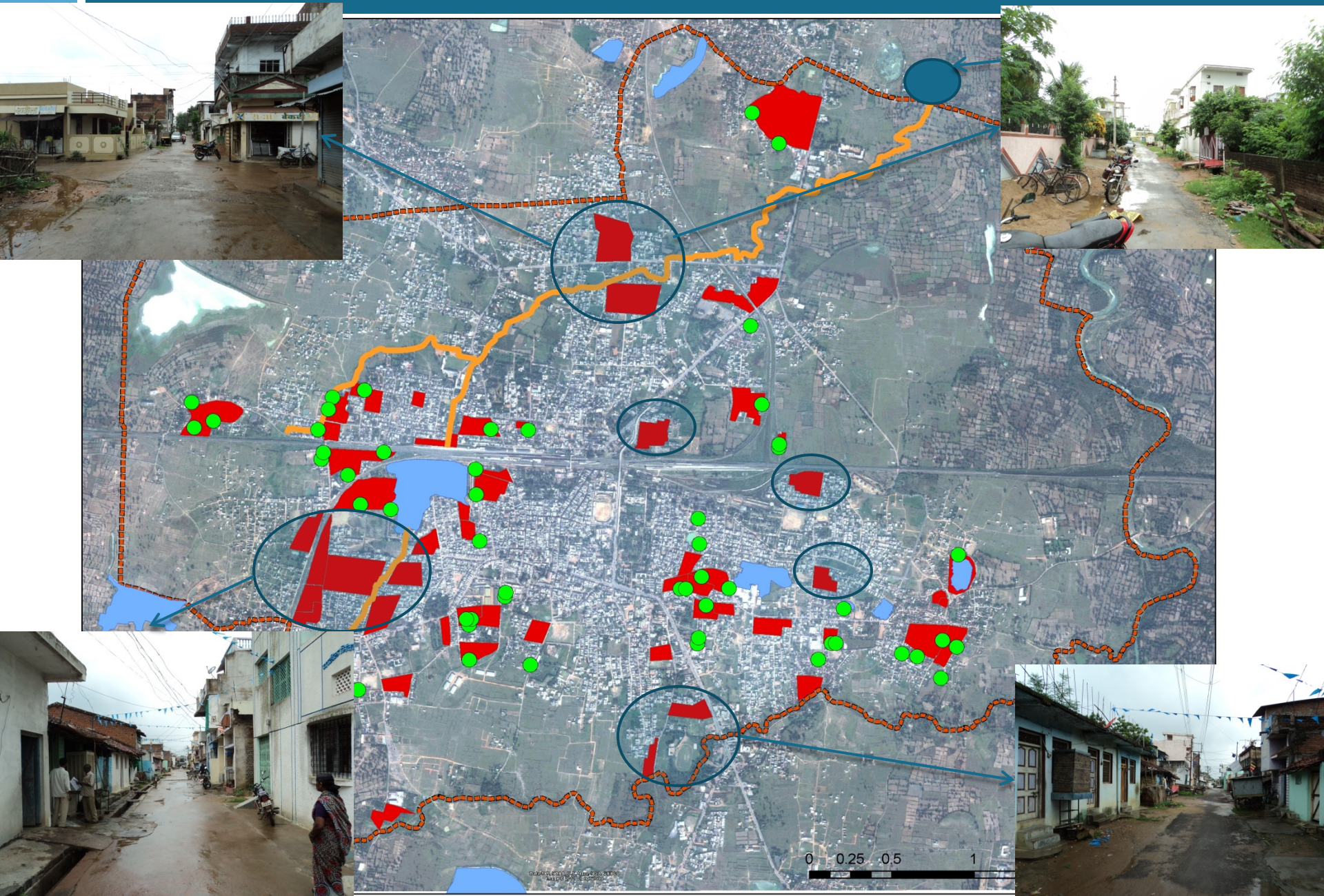
- As per sanitation ratings Gondia ranks 59 at country level and 2<sup>nd</sup> Rank in A class municipal council in Maharashtra.
- Gondia has also won 1<sup>st</sup> prize in Sant Gadge Baba award in 2006 & 2009

# Existing Wastewater System





# Location of Public Toilets





# Toilet Status

No. of Slum HHs - 8100  
No. of individual toilets in Slums – 4100

Total Community Blocks – 90  
Functional community blocks - 50  
Non Functional community blocks - 24  
Demolished community blocks - 16

Pay and Use toilets - 2 blocks

Total toilet seats – 544  
Functional toilet seats – 370  
Non functional toilet seats – 174

## What we found in the city

- As per the recent survey conducted by ULB they require 3919 individual toilets needs to be constructed as per DPR.
- Now at present, there are 53 persons depending on 1 functional community toilet seat, which is very much near to the norm of 50 persons per toilet seat as per guideline of WSP MoUD 1997.
- We did not find any major Open defecation sites in city.

# Situation of Wastewater



No. of Public toilets : 90



No. Of individual  
toilets : 25920



No. of individual toilets in slums : 4100





# Situation of Wastewater



Septic tanks



Open drains



Closed drains



# Proposed Underground Drainage Scheme

- The total cost of this sewerage scheme is Rs. 73.56 crores
- The Indicators that will be impacted with these projects are:

Coverage of toilets	Coverage of individual toilets in slum settlements	Coverage of sewerage network services	Coverage of HH connections to sewerage network in slum settlements	Collection efficiency of the sewage network	Adequacy of Sewage treatment capacity	Quality of sewage treatment	Extent of recycle and reuse of sewage	Efficiency in redressal of consumer complaints	Efficiency in collection of sewerage related charges	Extent of cost recovery in Sewage Management

Sr.No	Project Components
1	Underground sewerage network – Length of Network: 217536 M
2	3 No. of wet well and Pump House
3	Sewerage Pumping machinery and submersible Pumps at Pumping stations
4	Sewerage Pumping Main from Wet Well to STP & MH
5	STP of 25.50 MLD capacity
6	Electric power connection
7	Railway & Road crossings
8	Miscellaneous work
9	Trial Run
10	Maintenance Equipment & Machinery
11	Land Acquisition

# Outcomes of Discussions

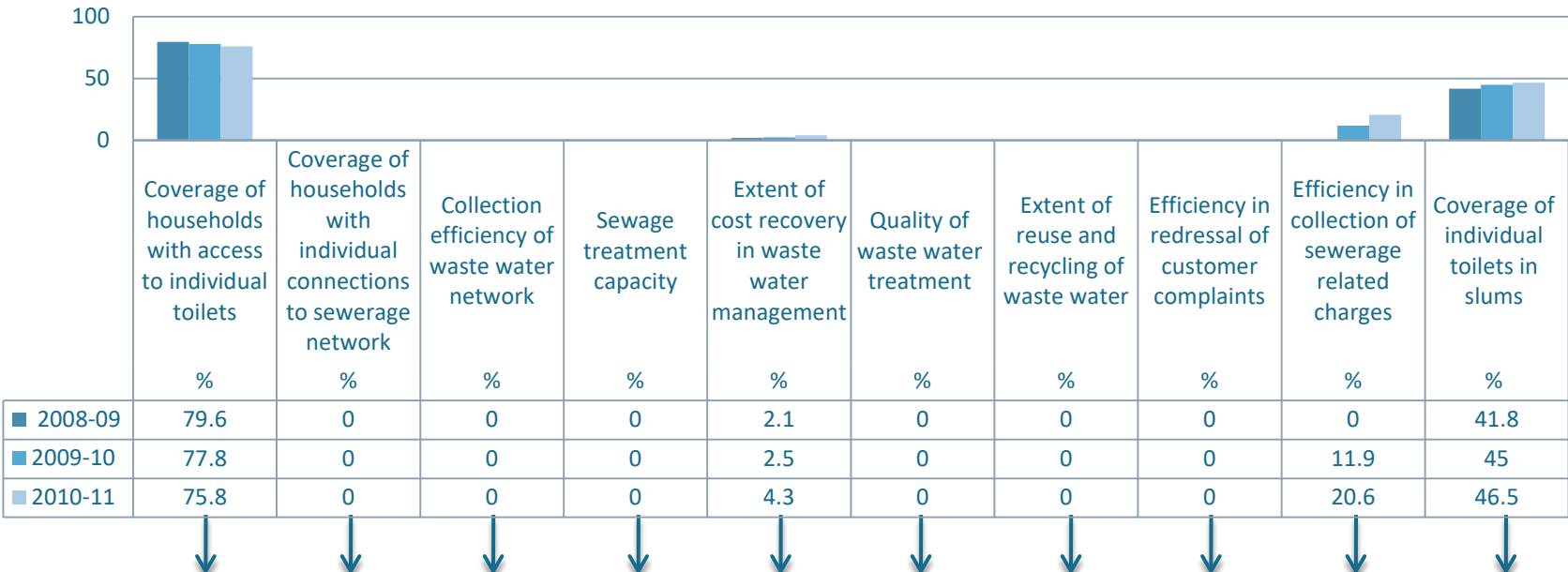
---

- Underground drainage project is proposed but official says there is no need of UGD – Reasons road width is very less.
- Management of open drains is fairly good
- As such there was no issues found related to chocking of open drains.
- Laying of open drains on adhoc basis
- No treatment of waste water
- Probability of contamination of ground water due to septic tanks, as ground water level is very high.
- No sludge disposal management system
- Low cost recovery & collection efficiency of taxes



# Action Areas for Wastewater

Waste Water Indicators



## Areas of Substantial Capital Investment

Construct primary treatment facility for waste water conveyed through surface drains

Need to Implement Fecal Sludge Management in City

# Action Areas for Wastewater

- **Underground drainage project is proposed but official says there is no need of UGD**
  - For this the option is to cover the existing open drains with an R.C.C precast slab which can have openings at every 50 m for maintenance purpose. In few slums this system already exists and that can be replicated
  - The cost of covering the drains is Rs. 1.84 crores ~ 2 crores
  - The project can be started in year 2012 and the work can be completed 1 Year

Length of Open drains (km)	Width of drain (m)	Thickness of drain cover (m)	Quantum of Work (cum)	Rate of construction (Rs/cum)	Total cost of Construction (In Rs. crores)
123	0.5	0.06	3690	5000	1.845

- **Probability of contamination of ground water due to septic tanks, as ground water level is very high.**
  - Policy on restricting the use of Ground Water and discontinuation of Pump house and Hand Pumps after implementation of UIDSSMT water project

# Action Areas for Wastewater

- **Fecal sludge Management**
  - The ULB has its own suction emptier for cleaning of septic tanks.
  - The ULB charges Rs. 500/trip within city and Rs. 800/trip outside city.
  - They dispose off the septage in Nala's or Agricultural lands
  - On an average the ULB has cleaned 9 septic tanks per month in year 2011

## WHAT CAN BE DONE ????

- Composting of all collected MSW and Fecal sludge at a dedicated site
- The ULB can have can have dump pits excavated in dimension of 30' x 10' x 3' as done in Barshi ULB
- The ULB can deploy a staff of around 1 Work Supervisor and 3-4 laborer at this site
- The ULB can have an auction of this compost matter every year among the farmers
- This will generate as source of income for the ULB

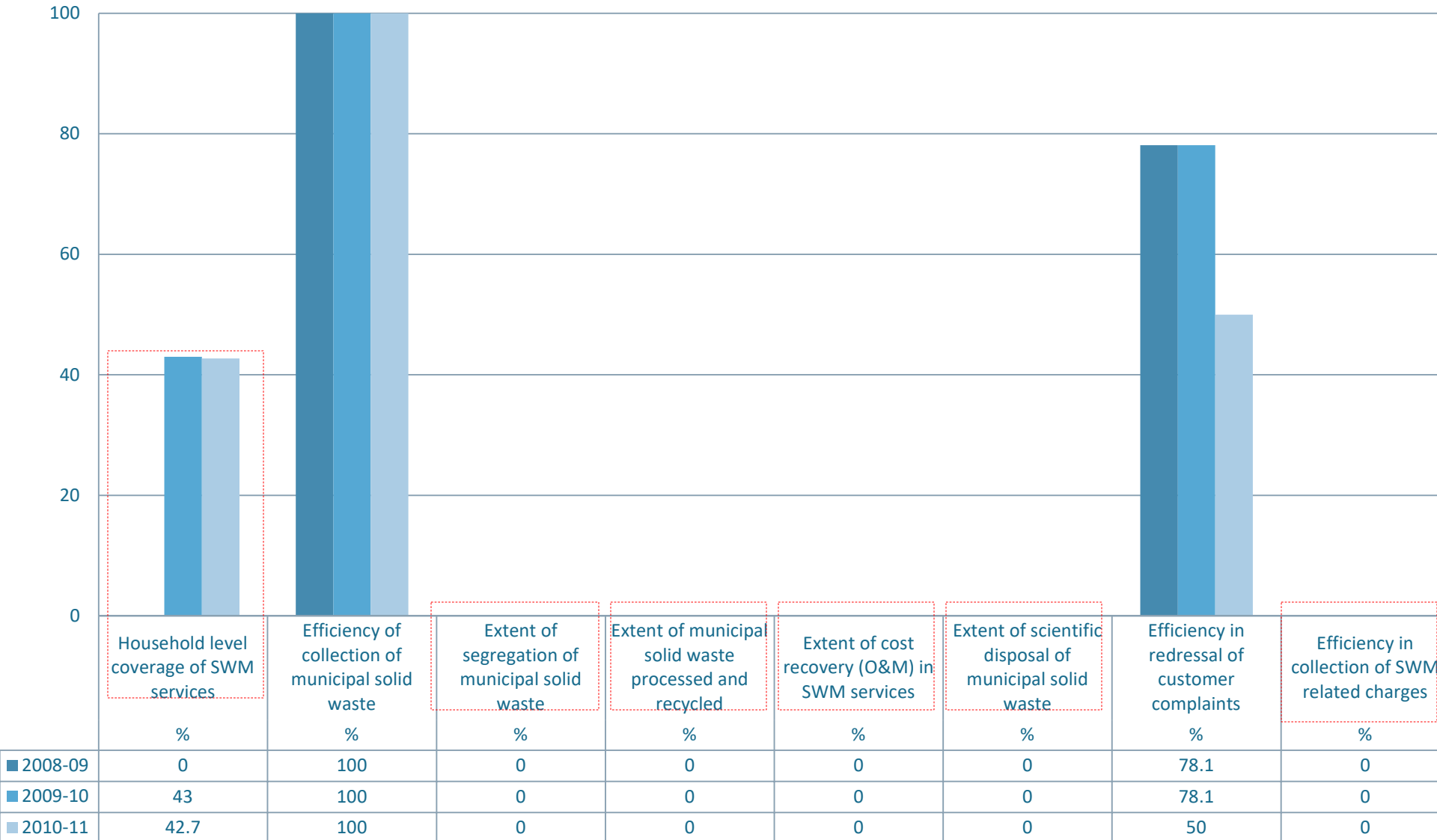


# Prioritization of Action Area in Wastewater

	AREA OF MINIMAL CAPITAL INVESTMENT	AREAS OF SUBSTANTIAL CAPITAL INVESTMENT	AREAS OF PROCESS & POLICY MEASURES
PRIORITY 1 (P1)	Upgrading open drains to covered surface drains – Rs. 2 crores	-	-
	Household level survey of individual toilets and community toilets in Gondia Rs. 10 lakhs		
	Improvement in collection efficiency of taxes	-	-
PRIORITY 2 (P2)	Refurbishment of existing unusable community toilets	Construct primary treatment facility for waste water conveyed through surface drains Oxidation pond : Rs. 11.27 crores Facultative aerated lagoon : Rs. 11.48 crores	-
	-	Implement Fecal Sludge Management	-

# SWM Indicators

SWM Indicators



# Existing Solid Waste Management

## Collection & Storage

- Door to Door collection of waste was started in year 2009

- Door to Door collection of waste is privatized in Gondia Municipal area.
- The contract is awarded to 2 contractors

- 1 Contract is on Per HH's basis
- The lowest bidder has quoted Rs. 9.5 per HH per month/.
- The 40 ghanta gadi is provided by municipal council and Contractor only provides the labours for this work.
- They collect the waste and dump it into the secondary collection bin. They work from 8 am to 2 pm

- The other contract was on annual basis.
- For this council is paying Rs. 2.8 lakhs per month to the contractor.
- The instruments and manpower are provided by the contractor

## Transportation

- ULB transports the secondary storage bins waste to the disposal site

- Infrastructure details:
  - 40 Ghanta gadi,
  - 80 Secondary bins of 2.5 cum capacity
  - 3 dumper placers
  - 3 hoopers

## Treatment

- There is no treatment and recycling of waste taking place in the city

## Reuse & Recycle

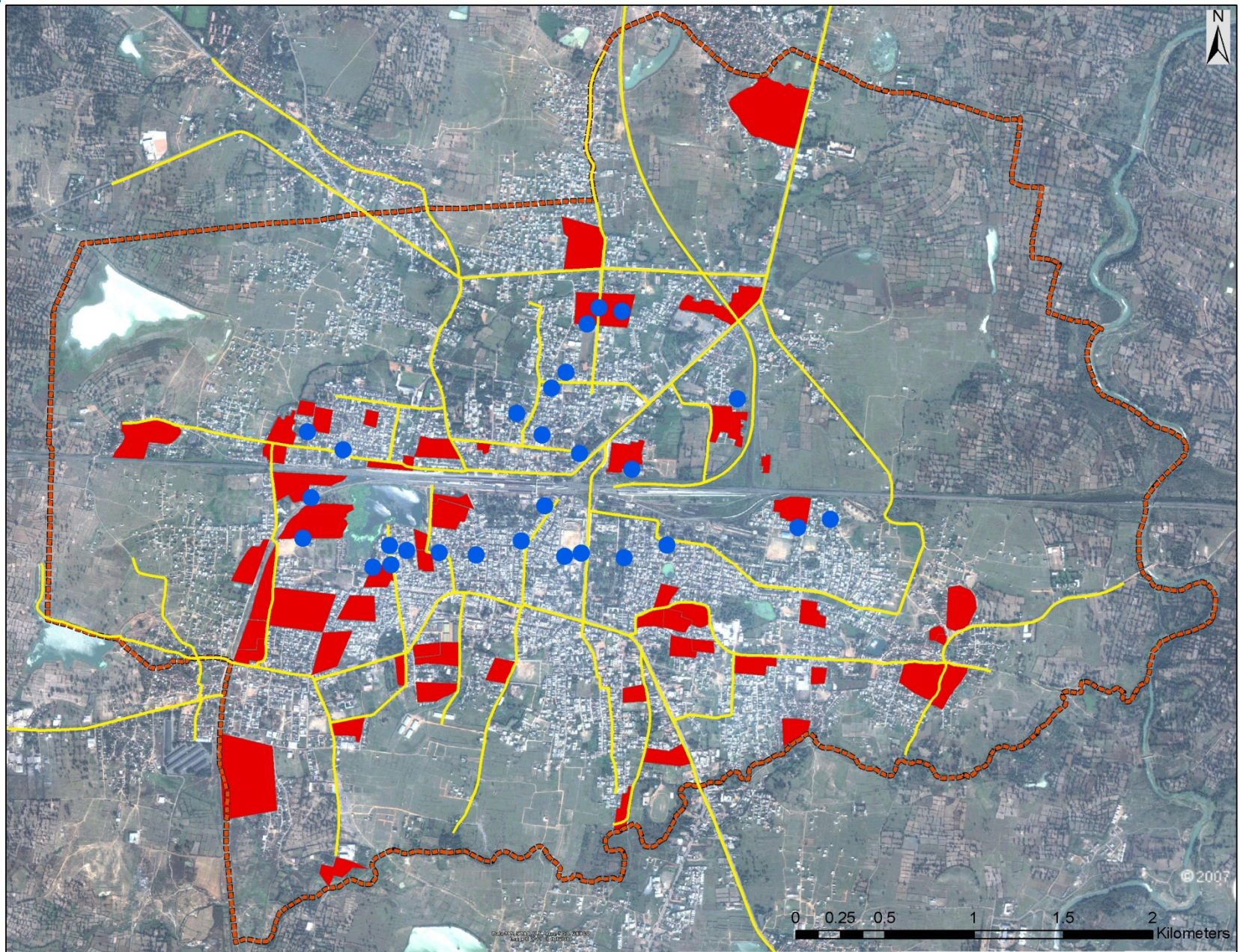
## Disposal

- A DPR for scientific disposal was prepared in Year 2007

- During the course of first 1 year of the above DPR it functioned smoothly
- But there was a land acquisition problem near the processing unit.
- The total land required for scientific landfill site was 3.74 acres of which 1.72 was acquired, but 2.02 was not acquired because of opposition of farmers and political will.
- The project didn't carry on and the project was closed.



# Location of Secondary Bins





# Situation of SWM



Road side collection of waste



Waste collected by HH's in slums



Waste collected in slums



Road side condition –  
Before sweeping



Road side condition – After  
sweeping



Waste collection



Dumper placer



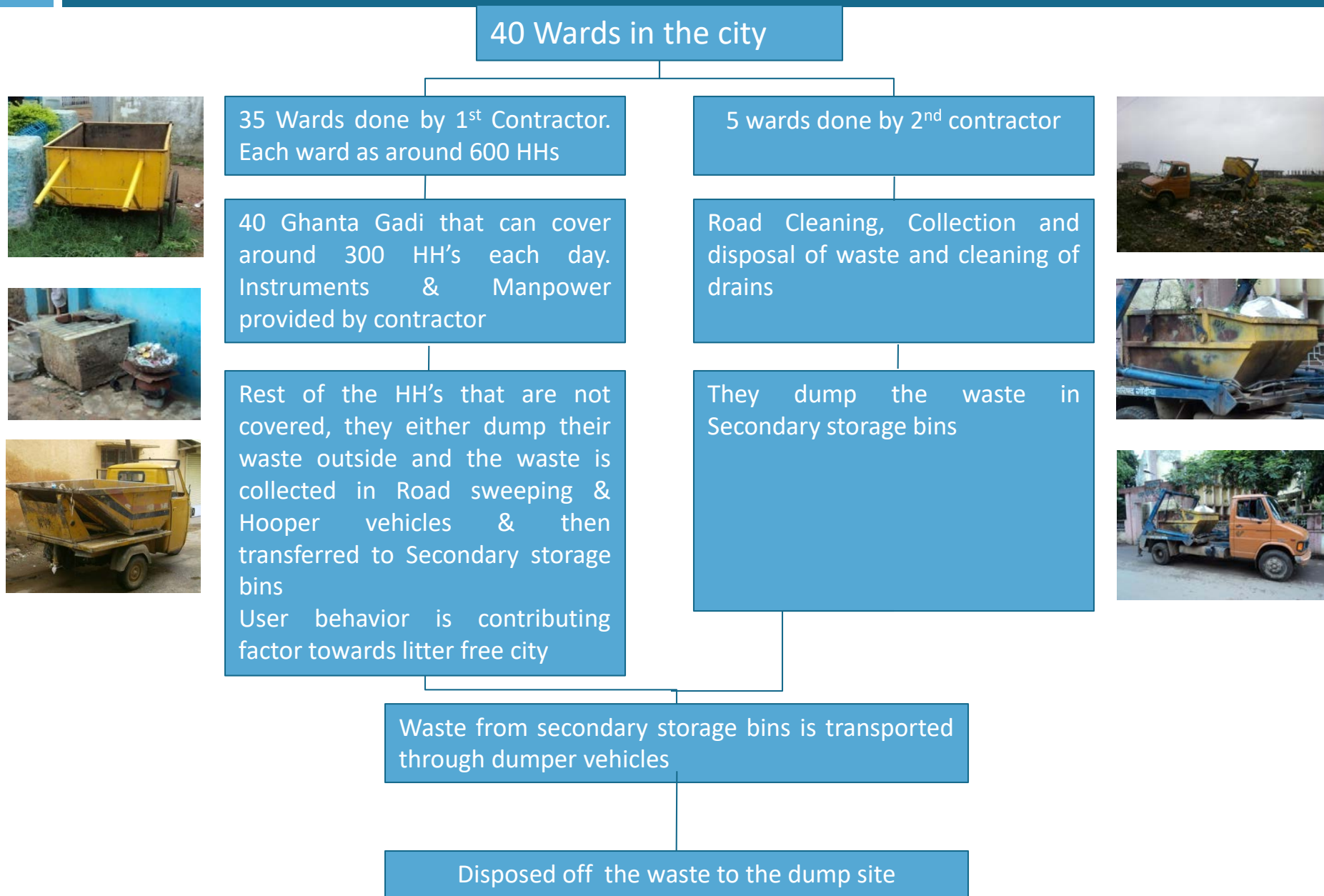
Dumper placer



Dumping Ground



# Clean City



# Old DPR of SWM (2007)

- **Action Plan 1 :** Collection & Disposal of waste of bulk generators such as hotels, restaurants, shops etc, debris & green waste
- **Action Plan 2:** Notify procedure of storage in two bins system and handing over of the waste to collection staff for all waste generators
- **Action Plan 3:** Door to Door collection of waste, segregation of waste at source in recyclable and biodegradable, avoiding multiple and manual handling of waste using closed waste bins and closed vehicles
- **Action Plan 4:** No waste shall be allowed to be thrown on the streets, footpaths, open places, drains or water bodies. To create the powerful implementing authority of above rule
- **Action Plan 5:** Reduction in waste at generating source and installing decentralized processing plants. Opening of recyclable waste purchasing centers
- **Action Plan 6:** Sweeping of roads and public places. Providing sufficient litter bins at public places
- **Action Plan 7:** Installation of Scientific and decentralized small processing plants
- **Action Plan 8:** Providing sanitary landfill site
- **Action Plan 9 :** Making arrangements for collection, segregation, transportation & Processing of biomedical waste



# Old DPR of SWM (2007)

## Costing of the DPR

Sr. No	Name of work	Cost in Rs.
1	Public road sweeping	2493000/-
2	Collection & Transportation Equipment & Vehicles	9338000/-
3	Collection & Transportation Bins & Containers	2145000/-
4	Processing & Disposal	31365000/-
	Total Cost	Rs. 45341000/-

## Indicators impacted by the DPR

Household level coverage of solid waste management services	Efficiency of collection of municipal solid waste	Extent of segregation of municipal solid waste	Extent of municipal solid waste recovered	Extent of scientific disposal of municipal solid waste	Extent of cost recovery in solid waste management services	Efficiency in collection of solid waste management charges	Efficiency in redressal of customer complaints	Household level coverage of SWM services in 'slum settlements

# Private Sector Participation

Sr. No	Sector	Agency (City)	Scope of Contract	Duration	Type of Contract	Value of Contract	Procurement Process	Other Key Features/Remarks
1	SWM	Gondia	D-D collection of waste through Ghanta Gadi	1 Year	Item Rate tender	Not Known	Through competitive bidding with bid selection	<ul style="list-style-type: none"> <li>The <b>Ghanta Gadi</b> is provided by the <b>ULB</b> and the <b>contractor</b> has to only <b>provide manpower and instruments</b> required.</li> <li>Each Ghanta gadi has to <b>cover atleast 250 to 300 houses per day</b></li> <li>The contractor is <b>Paid Rs. 9.5/HH/month</b> and for <b>offices</b> the contractor is paid <b>Rs. 18 per Month.</b></li> </ul>
2	SWM & Waste Water	Gondia	Road Cleaning, Collection and disposal of waste and cleaning of drains in ward no. 16,17,18,24,25	1 Year	Annual Rate contract	Rs. 2,08,000 per Month	Through competitive bidding with bid selection	<ul style="list-style-type: none"> <li>The <b>tractor trolley</b> and the <b>manpower</b> have to be provided <b>by the Contractor.</b></li> <li><b>Per container Rs. 400 per trip</b> is <b>deducted from contractor's bill</b> as the containers were provided by the ULB.</li> <li>If the <b>work is not carried out</b> during the day then the <b>contractor</b> will be <b>penalized with Rs. 7000 per day.</b></li> <li>If a <b>complaint is not redressed</b> within 24 hrs of intimation to contractor, then a penalty of <b>Rs. 1000 per day will be charged</b> on contractor.</li> </ul>
3	SWM & Waste Water	Gondia	Providing Tractor trolley and JCB	1 Year	Item Rate Tender	Not Known	Through competitive bidding with bid selection	For <b>cleaning of drains</b> or for excavation or for <b>carrying waste</b> the rate for <b>hydraulic tractor trolley</b> is <b>Rs. 295 per trip</b> and if <b>JCB machine</b> is used for cleaning or lifting <b>Rs. 965 per hour</b> is charged from the ULB

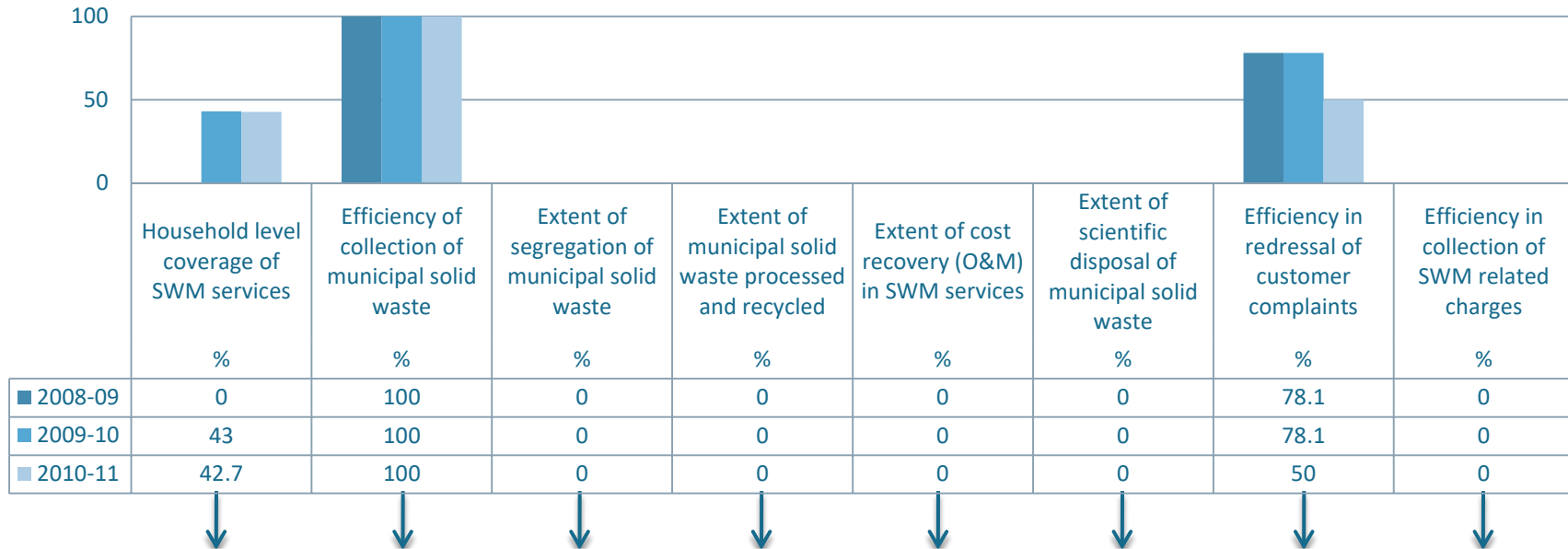
# Outcomes of Discussions

---

- DPR on SWM is ready, but it could not be implemented due to political issue
- The coverage of Solid waste Management is low because there are not sufficient number of Ghanta gadi with ULB.
- No treatment facility
- Cost recovery of taxes is low.

# Action Areas for SWM

SWM Indicators



## Areas of Minimal Capital Investment

Increasing coverage through equipments installation for primary collection system								
Introduce taxes for Solid waste Management								
Treatment plant for Biodegradable waste using composting								



# Action Areas for SWM

- **The coverage of Solid waste Management is low because there are not sufficient number of Ghanta gadi with ULB.**
  - Procurement of another 40 Ghanta gadi, the unit cost of Ghanta Gadi is Rs. 21000/-, the total cost of procurement is Rs. 8.4 lakhs.
  - This project can be implemented in Year 2011 only
  - Due to this the coverage of Solid waste Management will become 100%
- **Introduce taxes for Solid waste Management**
  - Pass a resolution in Committee regarding introduction of Taxes for solid waste for the services provided by the ULB to the people.

# Prioritization of Action area in SWM

	AREA OF MINIMAL CAPITAL INVESTMENT	AREAS OF SUBSTANTIAL CAPITAL INVESTMENT	AREAS OF PROCESS & POLICY MEASURES
PRIORITY 1 (P1)	Increasing coverage through equipments installation for primary collection system – Rs. 8.4 lakhs	-	-
	Treatment plant for Biodegradable waste using composting – Rs. 170 lakhs		-
	Introduce taxes for Solid waste Management	-	-
PRIORITY 2 (P2)	-	-	-

# Property Tax

- There are **36577 properties** in Gondia Municipality limits as on 2011-12 of which **32549 are residential properties** which include slum properties and open plots.
- There are **3747 commercial properties** and **281 government properties**.
- Last property tax assessment** was done in year **2003-04** and it takes place every 4 years, but it has **not been done in year 2007** because of **political pressure** and it will still not happen now because of political pressure.
- One **agency was appointed** for **property assessment** recently and they had **assessed more than 50 % of properties**, but due to **political pressure** the project was withdrawn.
- In Property register, **39/128** - means that **39 is ward no** and **128 is house no**. If on the **same property** there are **2 HH's** and if they have registered then they will be **given number as 39/128/A and 39/128/B**. For **flats** also they will be given as **39/128/A, B, C.....**
- Property tax bill is sent to each HH's**
- No PSP** in bill generation, distribution and collection

(नमुना ४८ नियम ७७ पहा )  
रोजी संपणाच्या कालावधीच्या कराचे बिल  
**गोंदिया नगर पालिका**

क्रमांक **4**

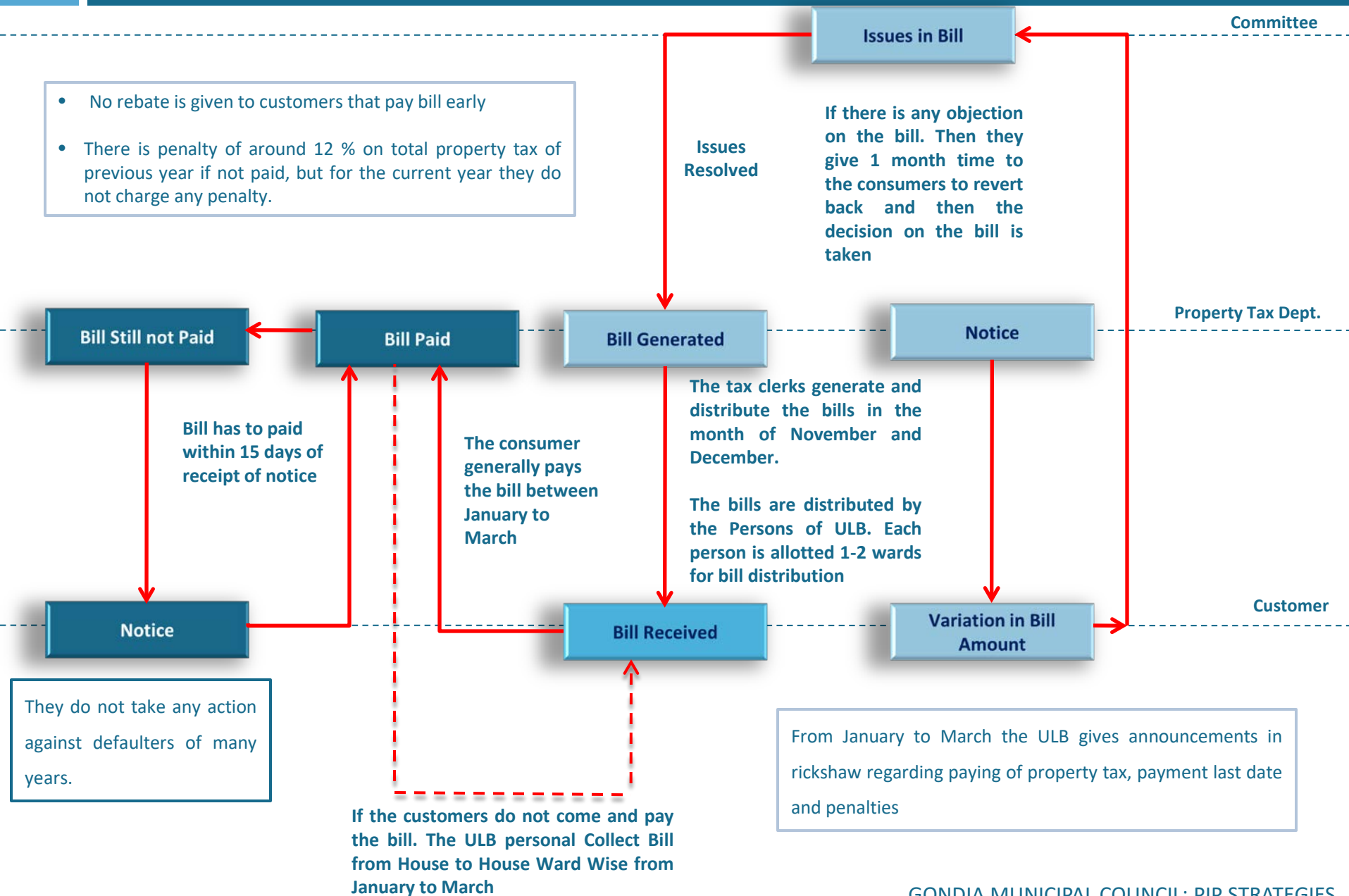
नाव **श्री देवाजी फाखे (गहने) रहिने**  
पता **रामनगर वाई छ 9**  
मागणी नोंद वहीतील अनुक्रमांक **979**  
**02-08** सभाच्या स्तंभ ३ मध्ये दर्शण्याचे आले **69८२/-** रुपये स्वकमेचे कर  
आपणा कडून **90-99** च्या संबंधात येणे असुन आपण ते हे बिल दिल्यापासुन पंधरा  
दिवसाच्या आत नगरपालिके कडे भरावेत अशी आपणांस विनंती करण्यात येत आहे.

कराचे नांव	मागील थक बाकी	चालू मागणी	एकुण
✓ प्रा. कर	88६९/-	६७९/-	
✓ शिक्षा कर	१०२६/-	१२६/-	
✓ वृक्ष कर	८९/-	१४/-	
✓ रोजगार यारंटी कर	६०/-	१०/-	
✓ सॅंडीस टॅक्स	२६४७/-	८६०/-	
डिमांड नोटीस	६७८२/-		
इतर खर्च	६३२२/-		

पंधरा दिवसाच्या उक्त कालावधीत  
१) या बिलात मागणी केलेली देण्यात न आल्यास किंवा  
ब) ती कां देण्यात येऊ नये या बद्दल मुख्य अधिकारी खात्री पटेल असे कोणतेही कारण  
दर्शविण्यास आले नाही तर किंवा  
क) महाराष्ट्र नगर पालिका अधिनियम १९६५ यांच्या कलम अनुसार  
कोणतेही अपील दाखल करण्यात आले नाही तर उक्त स्वकम देण्या संबंधी आपत्कवर  
मागणी नोटीस बजावण्यात येईल.  
कार्यालय **गोंदिया नगर पालिका**  
दिनांक - **21/09/2020**  
मुख्य अधिकारी  
नगर पालिका, गोंदिया  
टिप - सभासांच्या स्तंभ २ मध्ये दर्शविलेली स्वकम चालू मागणीच्या स्वकमे बरोबर देण्यात येईल.

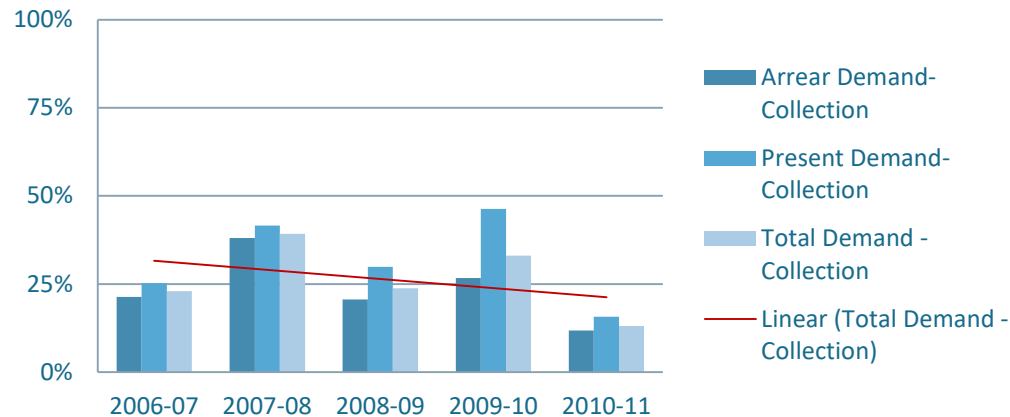


# Property Tax Billing cCycle



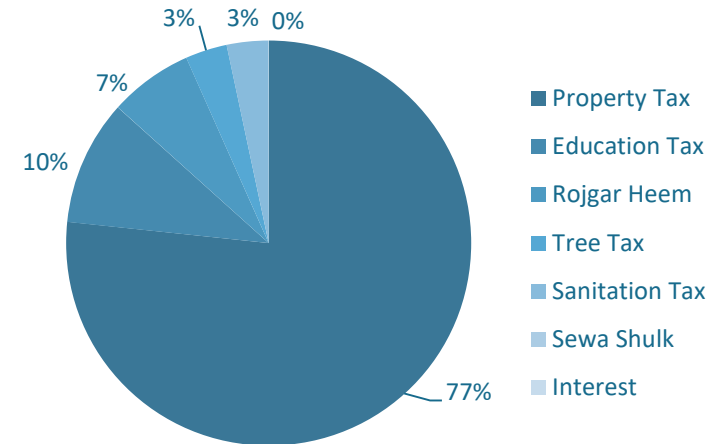
# Demand - Collection

Property Tax collection



Average Total Demand - Collection of tax is 26 %

Tax Breakup 70



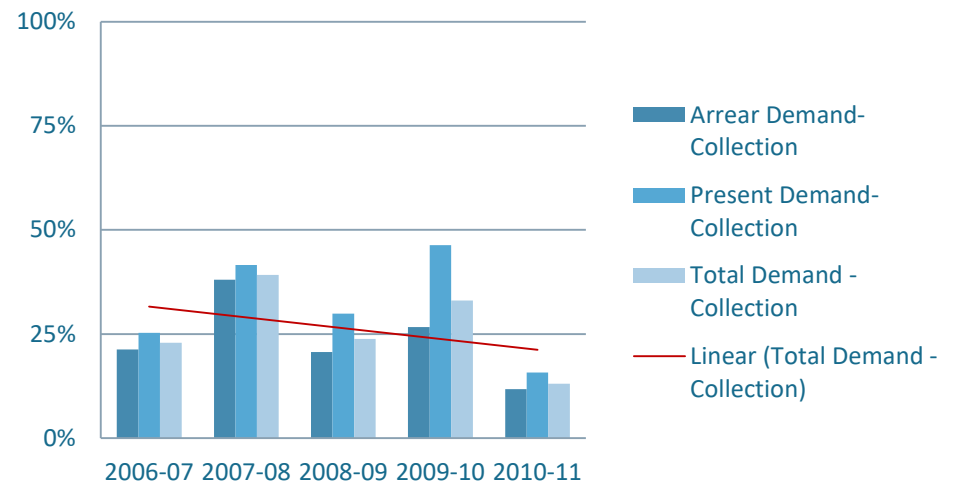
Major portion is Property tax (Property kar)

Average Property tax (Property kar) demand and collection is 27 %

Average Sanitation tax demand & Collection is 28%

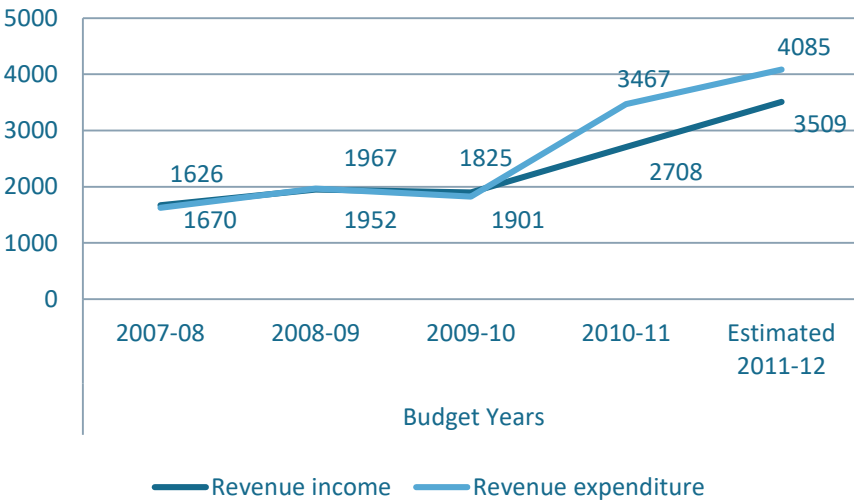
There is an issue in Collection efficiency of taxes

Property Tax collection

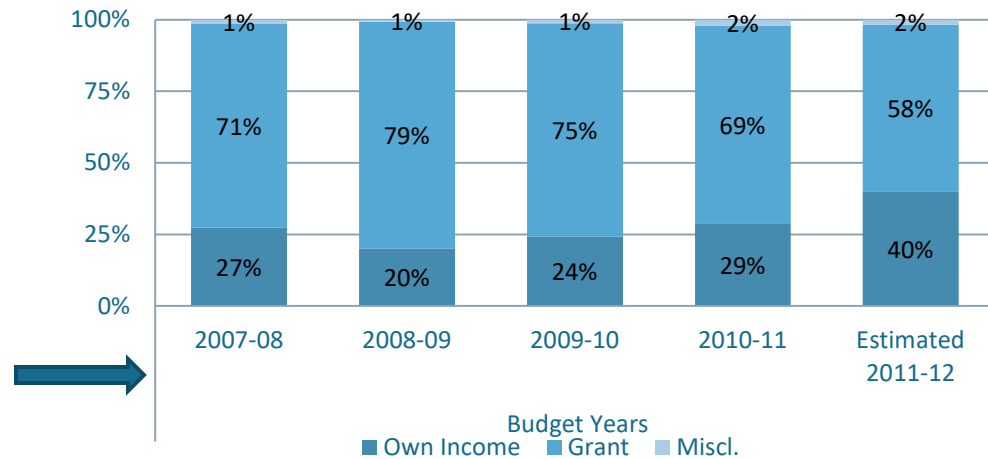


# Finance (Revenue) - ULB

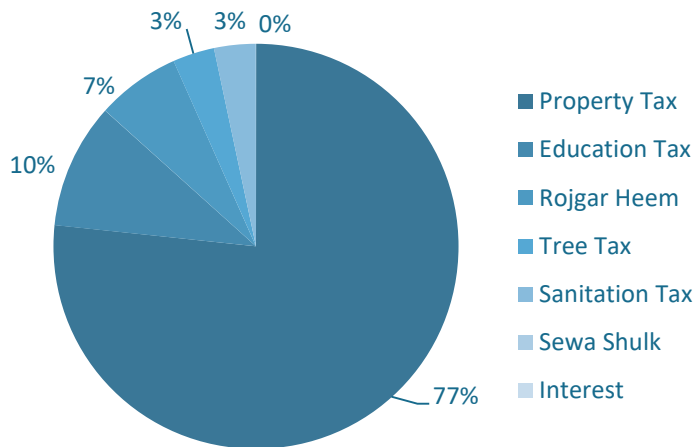
Revenue Income & Expenditure in Rs. Lakhs



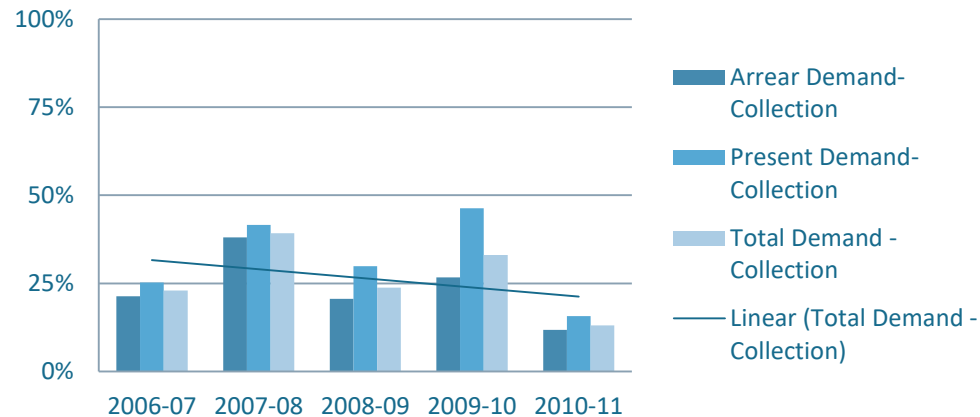
Distribution of Revenue income



Tax Breakup 70



Property Tax collection

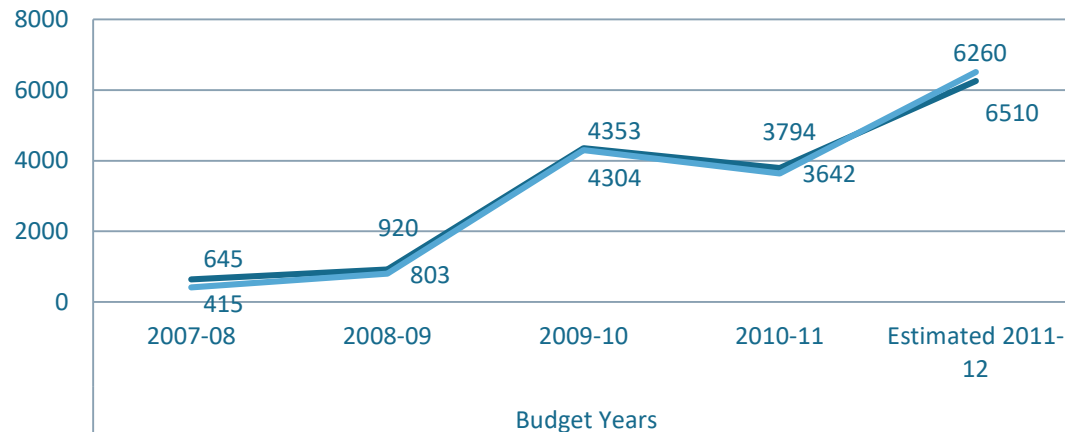


Average Total Demand and Collection of tax is 26 %



# Finance (Capital) - ULB

Capital Income & Expenditure in Rs. Lakhs



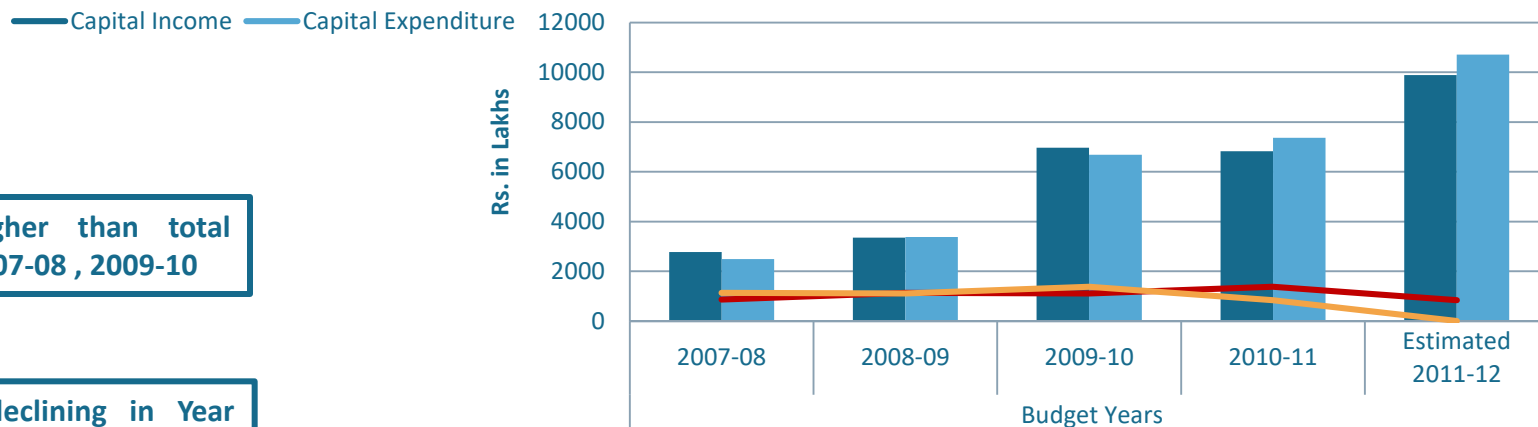
**Capital Expenditure is lower than Capital Income in almost all years except for 2011-12.**

**It means that the funds are under utilized**

**Total income is higher than total Expenditure in Year 2007-08 , 2009-10**

**Closing Balance is declining in Year 2010-11 and 2011-12.**

Income-Expenditure



Income	2771	3352	6961	6823	9886
Expenditure	2496	3383	6687	7368	10712
Opening Balance	861	1136	1106	1379	835
closing balance	1136	1106	1379	835	8

# Summary of PIP Actions

	AREA OF MINIMAL CAPITAL INVESTMENT	AREAS OF SUBSTANTIAL CAPITAL INVESTMENT	AREAS OF PROCESS & POLICY MEASURES
Water	Additional connections using existing network	Additional connections by expanding distribution network	Policy for limiting the use of Ground Water
	Reduction in free water		Policy for discontinuing Hand pumps, Pump houses and stand posts
	Improvement in collection efficiency		Policy for giving individual water connections in slums
Waste Water	Upgrading open drains to covered surface drains – <b><u>Rs. 2 crores</u></b>	Construct primary treatment facility for waste water conveyed through surface drains Oxidation pond : <b><u>Rs. 11.27 crores</u></b> OR Facultative aerated lagoon : <b><u>Rs. 11.48 crores</u></b>	-
	Household level survey of individual toilets and community toilets in Gondia <b><u>Rs. 0.10 crores</u></b>		
	Improvement in collection efficiency of taxes	-	
	Refurbishment of existing unusable community toilets	Implement Fecal Sludge Management	
SWM	Increasing coverage through equipments installation for primary collection system – <b><u>Rs. 0.084 crores</u></b>		
	Treatment plant for Biodegradable waste using composting – <b><u>Rs. 1.70 crores</u></b>		
	Introduce taxes for Solid waste Management	-	Rs. 15 Crores is Required



Thank You