

Systemic impacts of Performance Assessment System (PAS) for consistent monitoring of water and sanitation service levels

Jigisha Jaiswal, Dhruv Bhavsar, Dr. Meera Mehta, Dr. Dinesh Mehta, Jaladhi Vavaliya, Dhvani Sheth, Apoorva Bhate, Gaurav Kushwaha

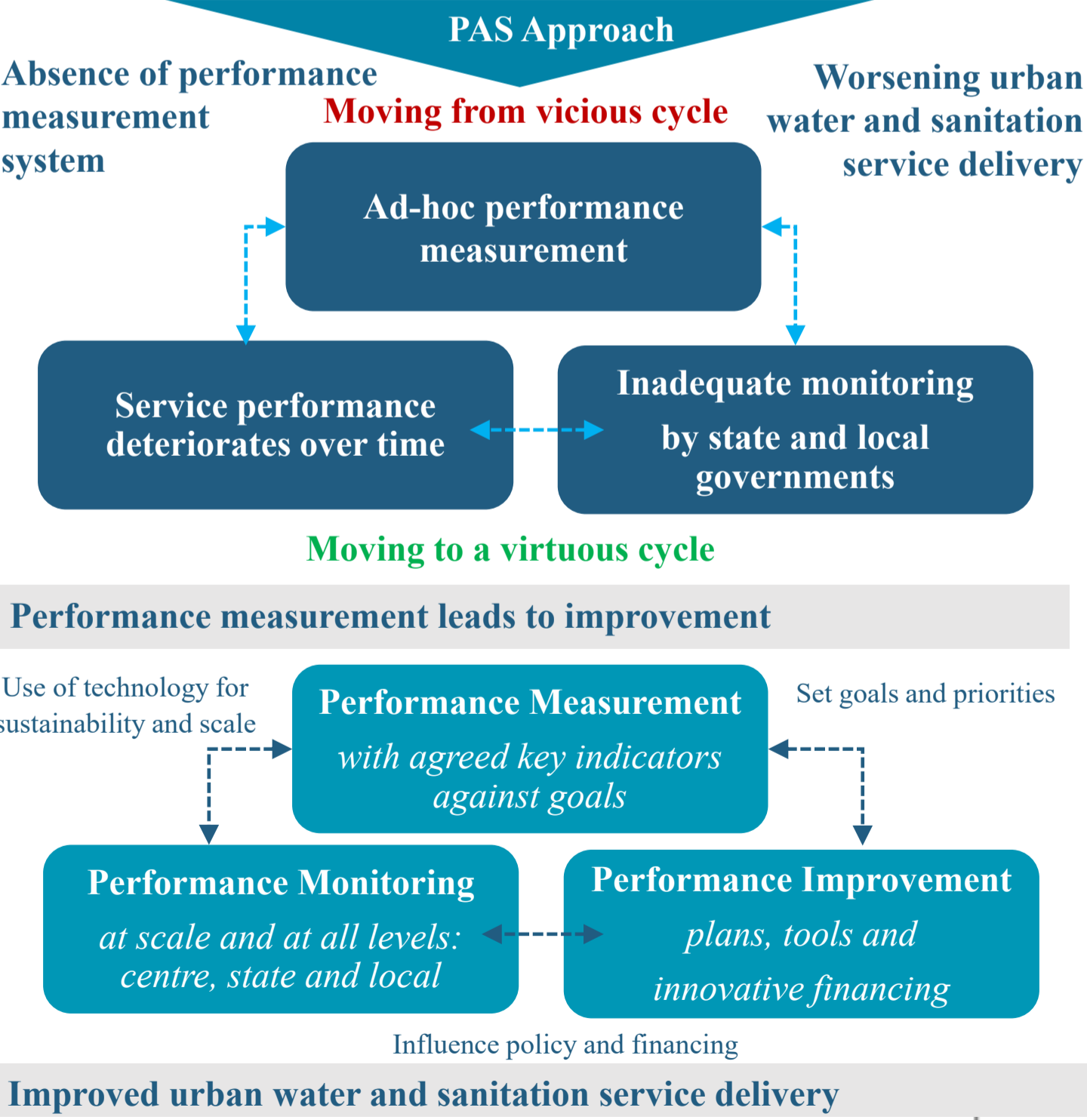
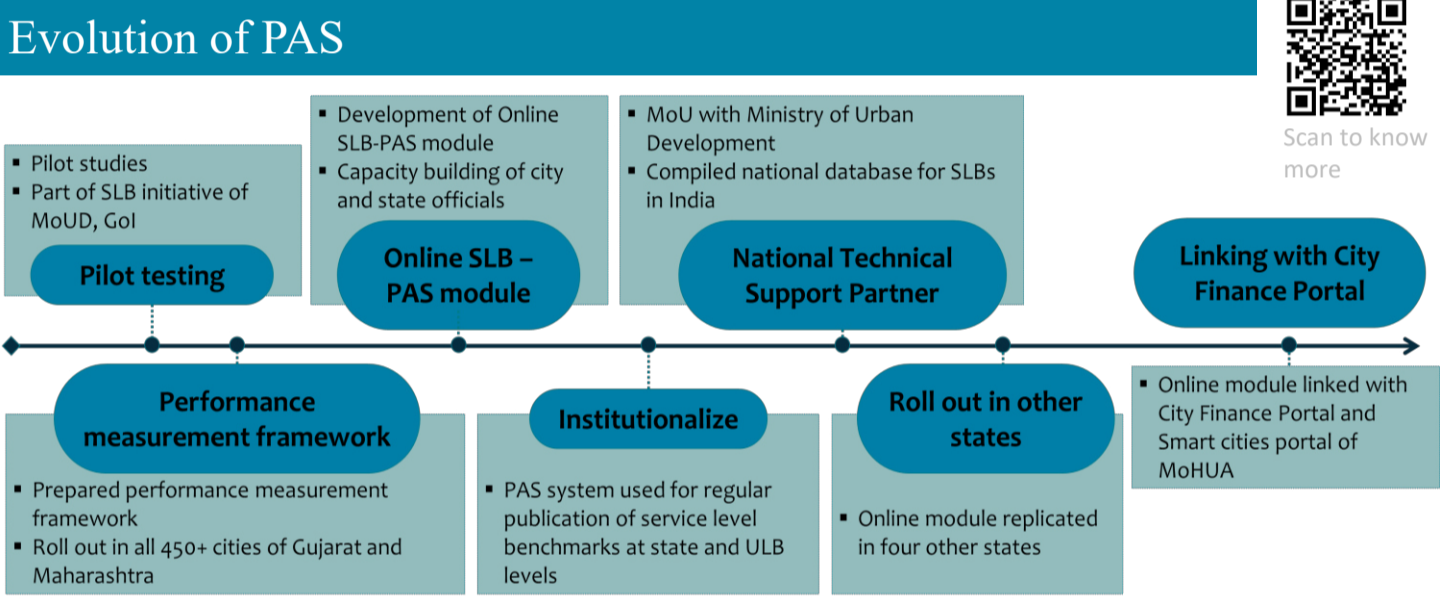
One of the largest databases for urban water and sanitation in India



In 2013 Ministry of Urban Development, Government of India, designated CEPT as National Technical Support Center for SLB

Started with → Presently used by 6 States- 1000+ Cities and 100 Smart Cities
2 States, 416 Cities

68 Million population → 160 Million population



Routine Monitoring

- Time series information on PAS dashboard –
- Performance measurement
- Investment programs and
- Identifying area of focus



Service Improvement Plans

- State and City refers PAS data for -
- DPRs
- City water balance plans (AMRUT)
- Action plans for solid waste management (SBM)
- Slum Assessment (PMAY)
- Jal Jeevan Mission (water quality)



Research and Advocacy

- Academicians and students of planning or technology colleges have used this information for research purpose.
- Consulting firms/consultants –
 - Vision Document
 - City development plans
 - City Sanitation Plans
 - Compendium



Decision making

- Financial decision related to WASH budget allocation and utilization of funds.
- Infrastructure planning and analyze the outcomes of investments

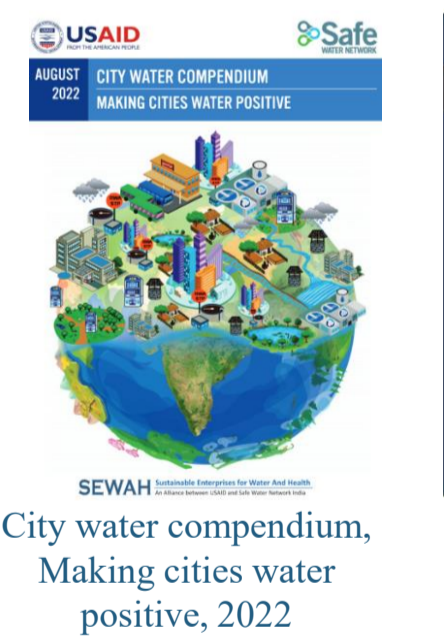


Compliance

- Government Regulations for making cities ODF, ODF+ and now ODF++ and water+ cities
- Performance audits – for selected ULBs in Maharashtra and assess their regulatory compliance (CAG)

PAS Influences

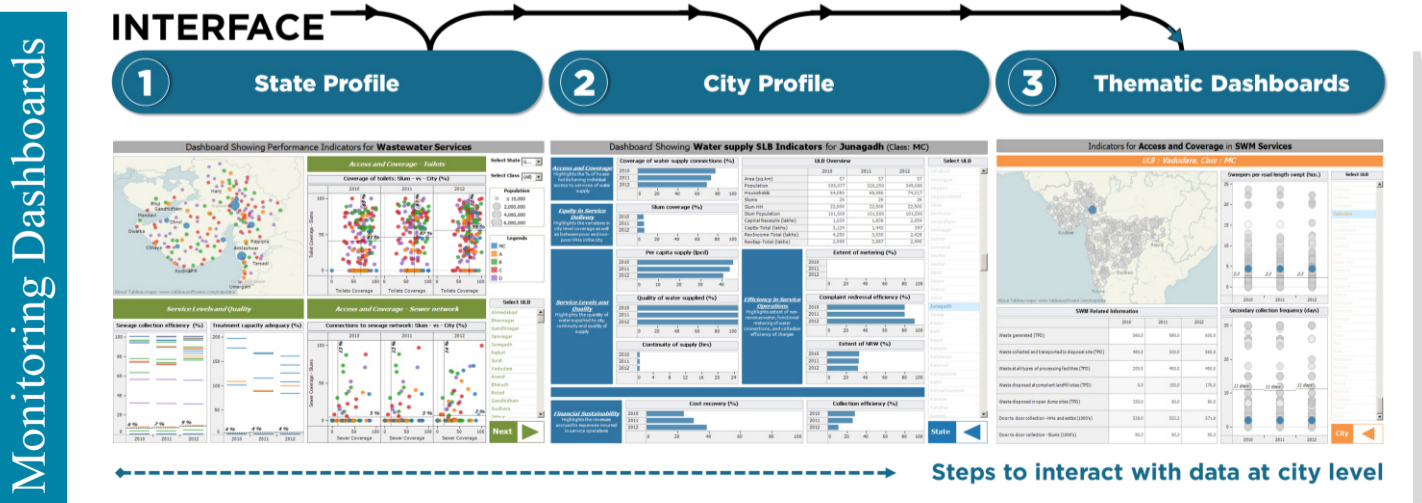
International reports



Government reports



Continuity of water, City Benchmarking | Solid waste management, city Benchmarking | Demography, Water Supply, Sanitation and Waste management | Septage Management, Faecal Sludge Management | Status of water supply and sanitation situation in India using PAS SLB



Ongoing Indian Missions to Achieve SDG 6

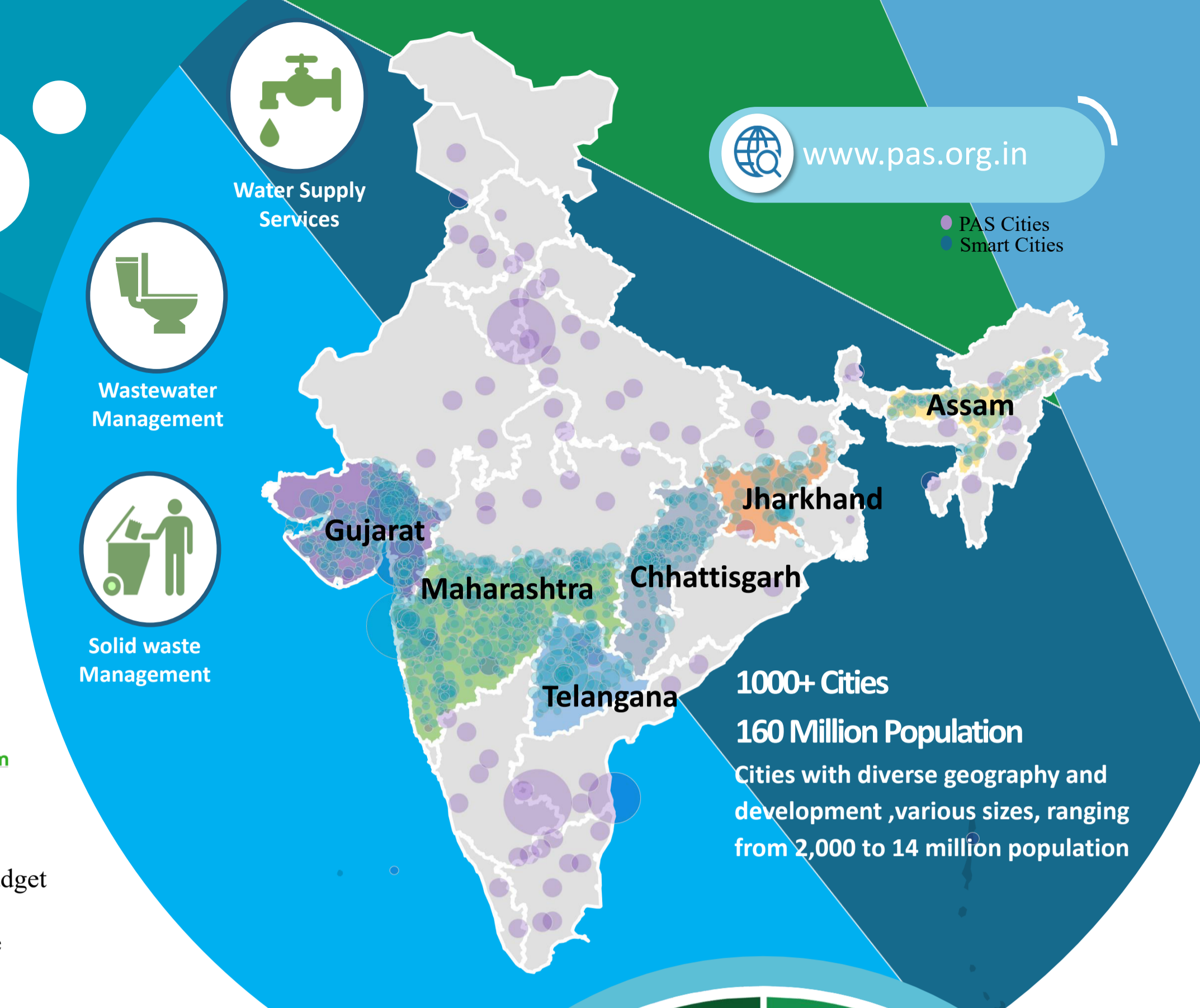
Making cities..

ODF+
No OD and all CT/PTs functional

ODF++
Safe management of wastewater with no open discharge

Water +
Domestic used water conveyance, treatment and by-products reused

SWACHCH BHARAT MISSION: Focusing on entire sanitation value chain from Access to reuse



www.pas.org.in

1000+ Cities
160 Million Population
Cities with diverse geography and development, various sizes, ranging from 2,000 to 14 million population

