

About FISH

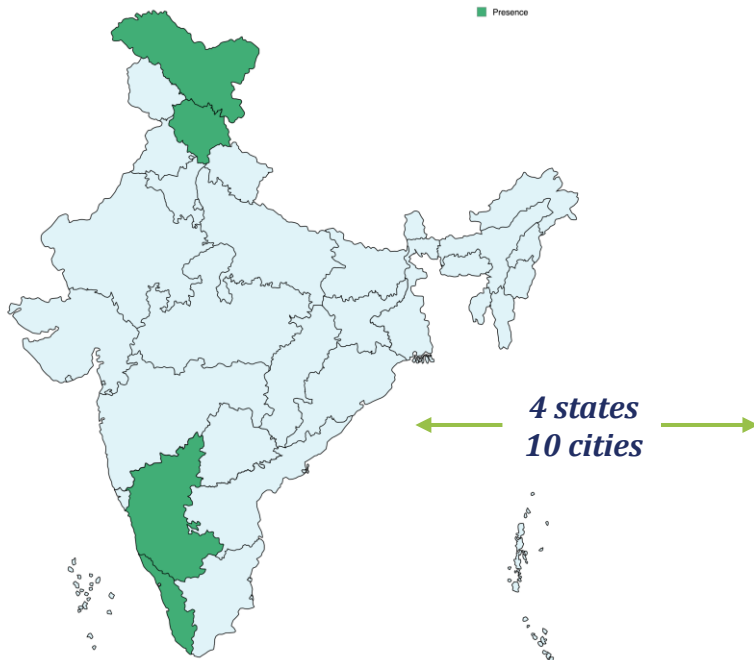
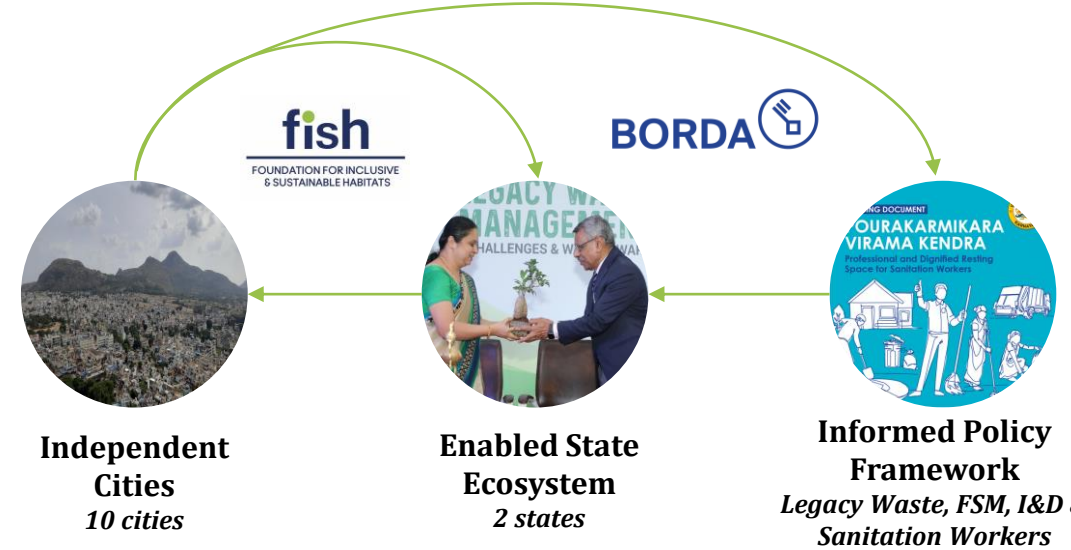
Global-Local Partnership for Sustained Change: BORDA & FISH

Vision: Co - Create Livable Small Towns for all!

Mission: Enable small towns municipalities and residents to drive climate sensitive & inclusive WASH outcomes

Guiding Principles

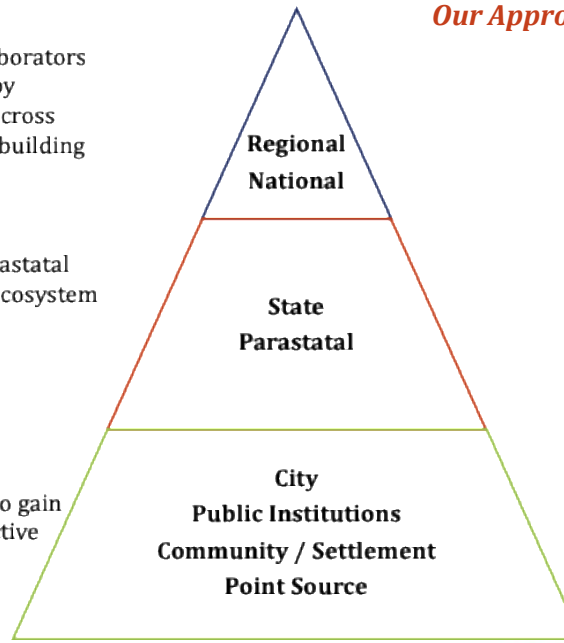
Decentralized | Nature based | Climate Smart | Co-Created | Locally Owned



Inspire sector collaborators and municipalities by knowledge sharing, cross learning & capacity building

Equip state and parastatal agencies to enable ecosystem development

Engage with cities to gain deep WASH perspective



Our Approach Towards Co-created Change

Scattered small towns voices consolidate to create systemic changes through coalitions / alliances influencing narrative, cross learning & policy changes

Supportive state ecosystem for promotion of **good governance, enabling finance, build capacity & requisite staff and creating right digital systems**

Enabled municipalities and involved citizens
Improved municipal preparedness (governance, finance, capacity etc.)

Decentralised WASH Services reaching all!

Climate Readiness in WASH and Waste Management ecosystem

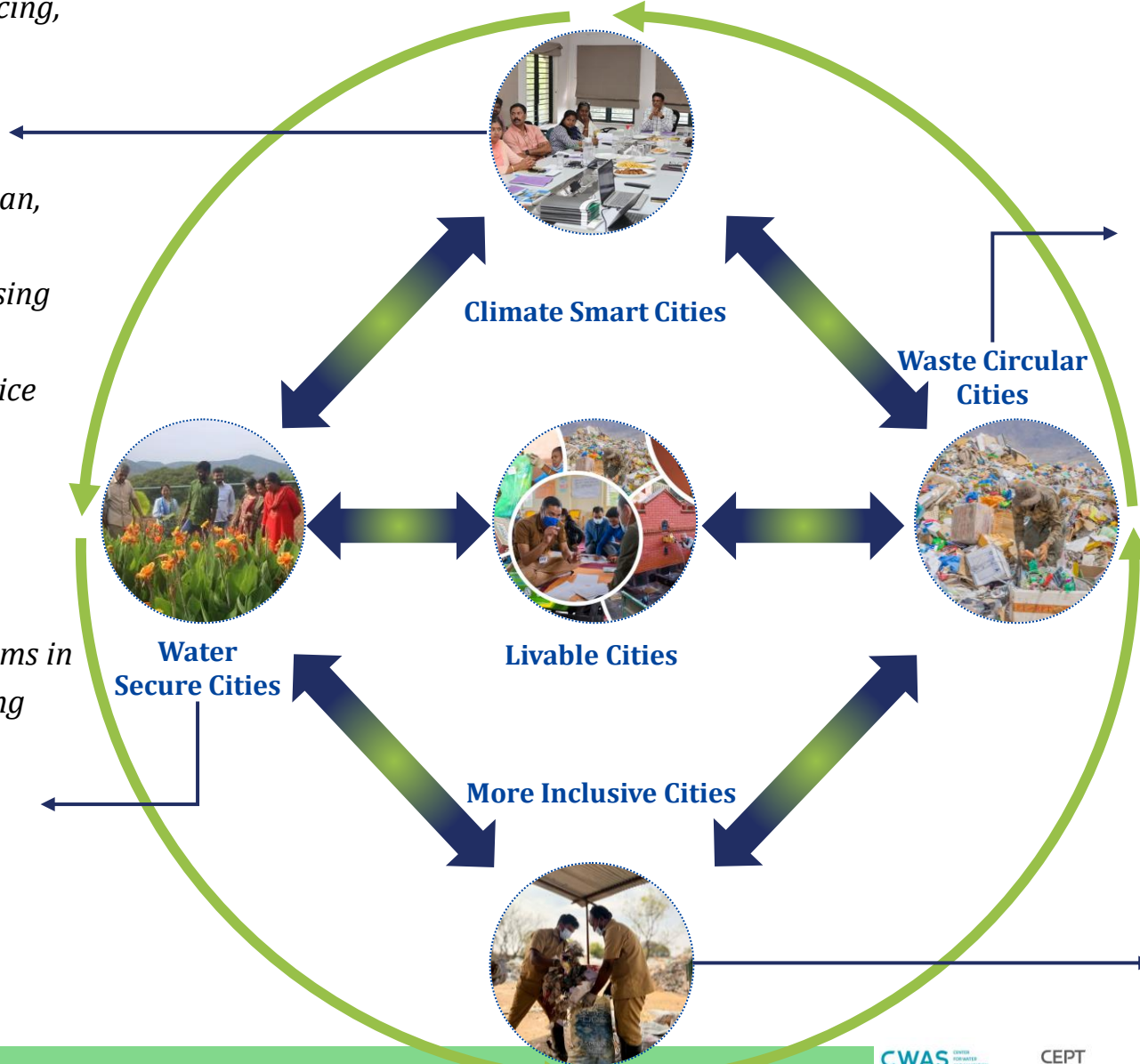
We contribute to WASH sector improvement in Small Towns while amplifying ground learnings

🐝 *Work with India's small cities to strengthen WASH governance, institutional capacity, and financing, with climate risk and social inclusion embedded as core priorities.*

🐝 *Support urban local bodies to plan, budget, and regulate water and sanitation services while addressing climate stresses such as water scarcity, flooding, heat, and service disruptions.*

💧 *Enable water security through climate resilient sanitation systems in India's small towns by prioritizing reuse, recharge, and resource recovery*

💧 *Promote safe reuse of treated wastewater and faecal sludge in agriculture, landscaping, and construction, while advancing decentralized and nature-based systems*









🗑️ *From linear disposal to circular material use*
 🗑️ *Work beyond routine collection – drive waste reduction, build local capacity, recycling, and recovery across the full value chain*

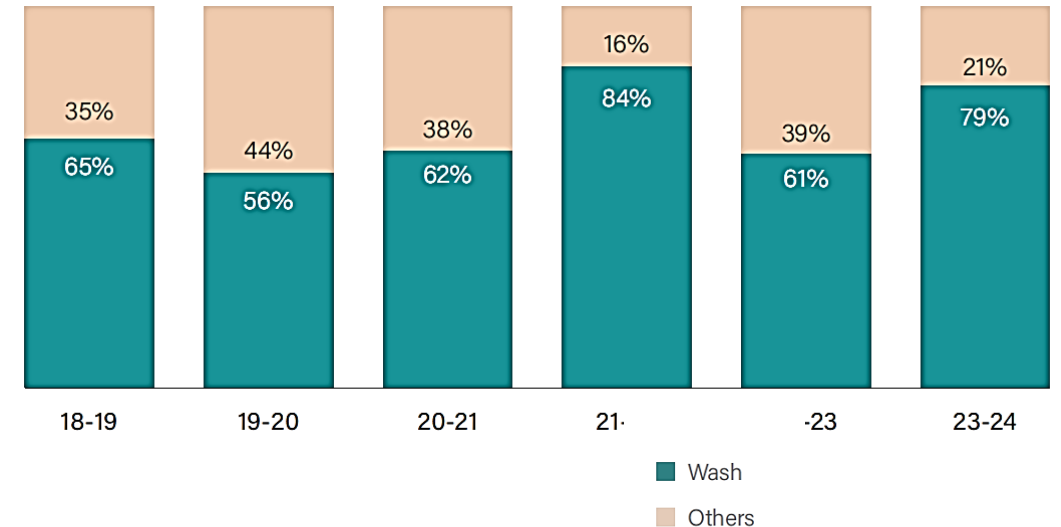
👥 *Improve access to essential WASH services for disadvantaged groups including sanitation workers*
 👥 *Address critical gaps in drinking water, toilets, bathing, and hygiene infrastructure at informal settlements, worksites and in residential areas, strengthening dignity, health, and safety.*

WASH- Strategic entry point for building resilience in Small Town

Sectoral responsibility matrix:

	PLANNING	IMPLEMENTATION	OPERATIONS/MINITO
MOBILITY 	DULT	KUIDFC	RTO, KSRTC
ENERGY 	BESCOM, KREL		
URBAN PLANNING & BIODIVERSITY 	TPA	TPA, CMC, KFD	TPA, CMC
HOUSING 	TPA, CMC	CMC, KHB, KSDB	CMC
WATER & SANITATION 	CMC, KUWDSDB	CMC, KUWDSDB	CMC
SOLID WASTE 	CMC	CMC	CMC

WASH in Municipal budget share



WASH constitutes to **Average 67%** of municipal expenditure in last 5 years

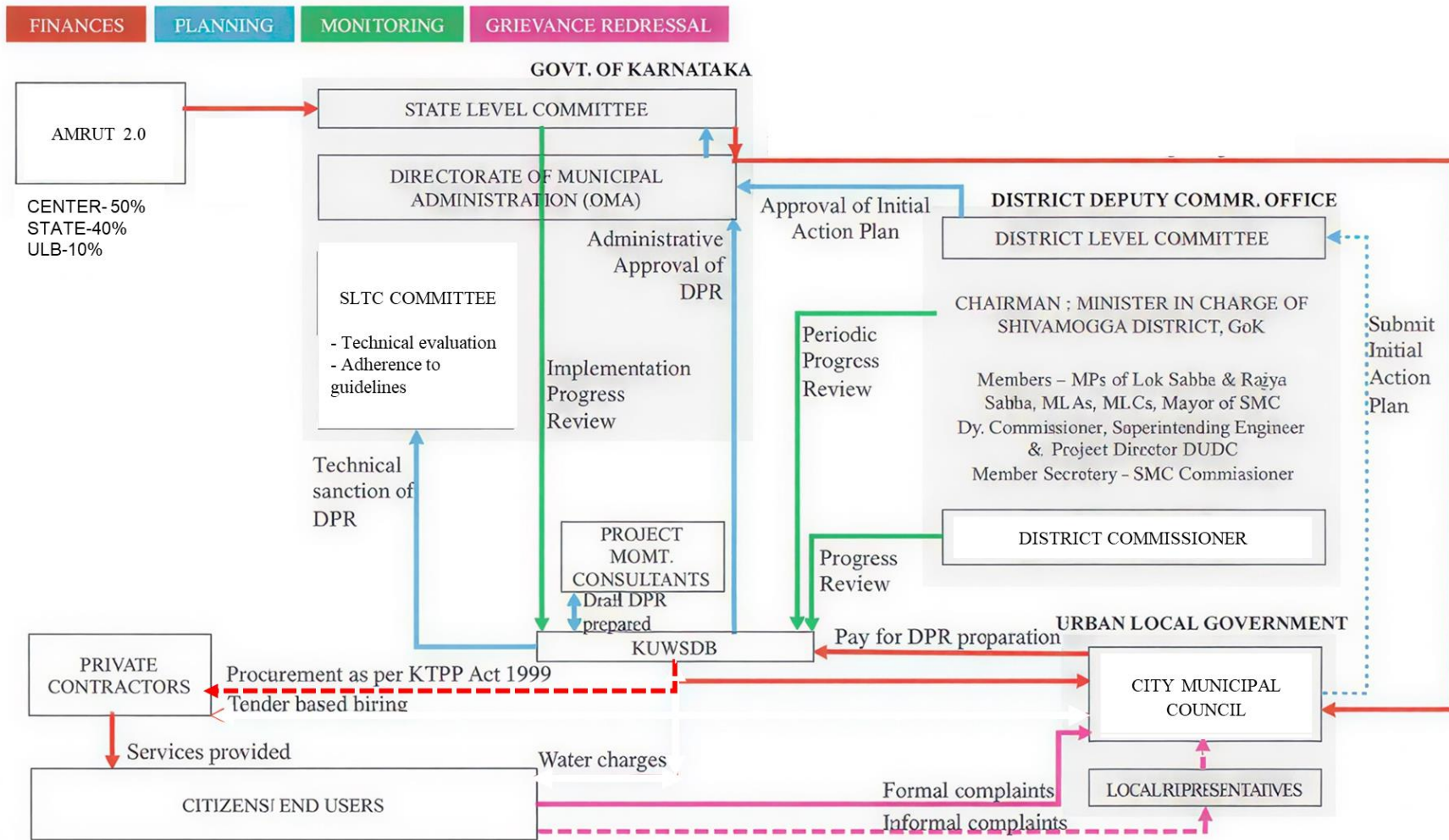
Source: WASH CAP, Chintamani

Role of Institution- WASH Infrastructure Development, Karnataka

Top-down governance systems where multiple stakeholders influence priorities and outcomes

Project	Scheme	Stakeholders					
		UDD/DMA	KUWSDB	KUIDFC	DUDC	ULB	LC
Water Supply	AMRUT 2.0	Policy Fund allocation Implementation framework	- Planning, Design (Pvt) Implementation (Pvt) - O&M for 5 years	No role	- Project Coordination - Project approval	- Support planning - Land allocation - O&M post 5 years	- Informed
Lake development	AMRUT 2.0 WRD	Policy & Fund allocation Implementation framework	- Planning (Pvt) - Design (Pvt)	No role	- Project Coordination - Project approval	- Implementation	- Informed
Storm water	OSR SFC	- No role	- No role	- No role	- No role	- Planning (Pvt) - Implementation	- Planning
STP & Network	NGT compensation	- Policy - Fund allocation	- No role	- Planning, Design (Pvt) - Implementation (Pvt) - O&M for 5years (Pvt)	- Project Coordination - Project approval	Support planning Land Allocation O&M post 5 years	
I&D	SBM 2.0	Planning & Design (Pvt)	- No role	- No role	- Project Coordination - Project approval	- Support planning - Implementation	-Informed
SWM	SBM 2.0	- Policy - Standard DPR/Design (Pvt) - Tender conditions	- No role	- No role	- Project Coordination - Project approval - Implementation	- Planning - Partial - Implementation	- Informed

Governance for water supply projects in Karnataka



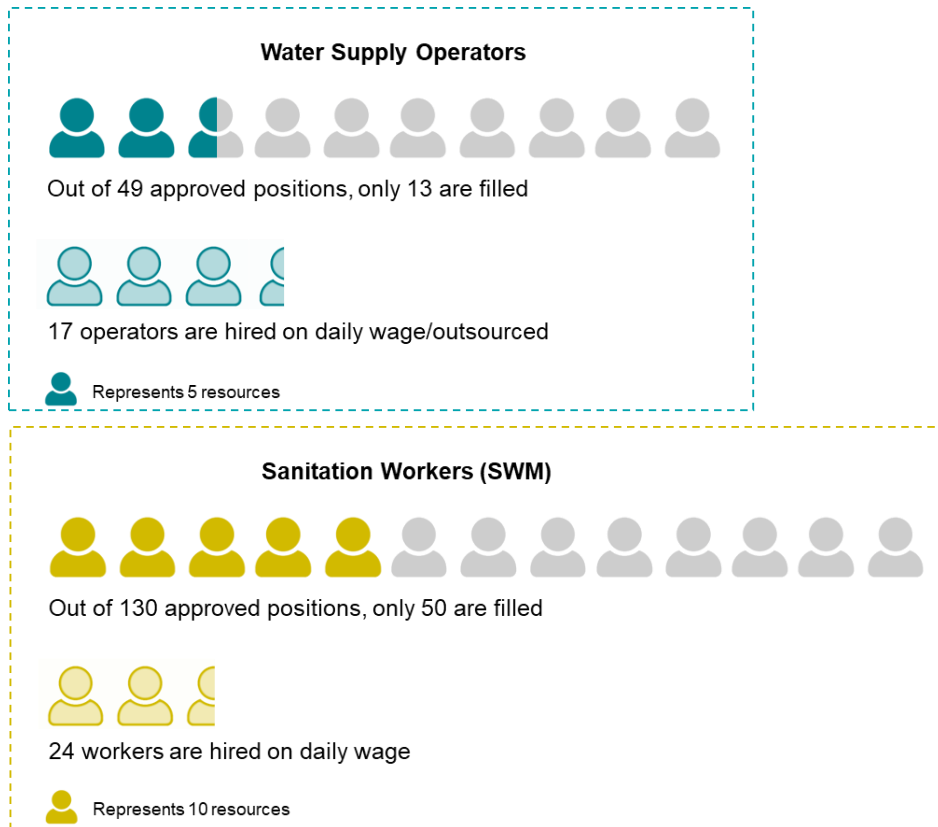
Centralised planning with decentralisation of Financial Risk to ULB

Private consultants & Parastatals steering WASH agenda.

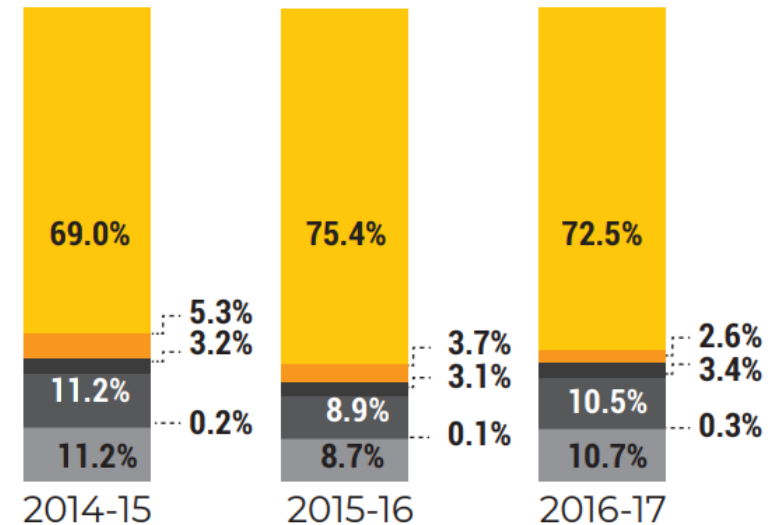
Source: Modified (Governance of Domestic water supply in small & Medium towns of Karnataka, Author: Aprna R & Anurima MB)

Functionaries & Fund in small town- What's under ULB's control?

HR capacity, Chintamani, Karnataka
 9 out of 12 technical post vacant
 60% vacancy



Local taxes and revenues are only 25-30% of total expenditure—making towns dependent on federal funding programs and their rules / norms / goals



- Transfers/Grants
- Other Revenue Receipts
- Other non-tax revenue
- Fees & User charges
- Other tax
- Property tax

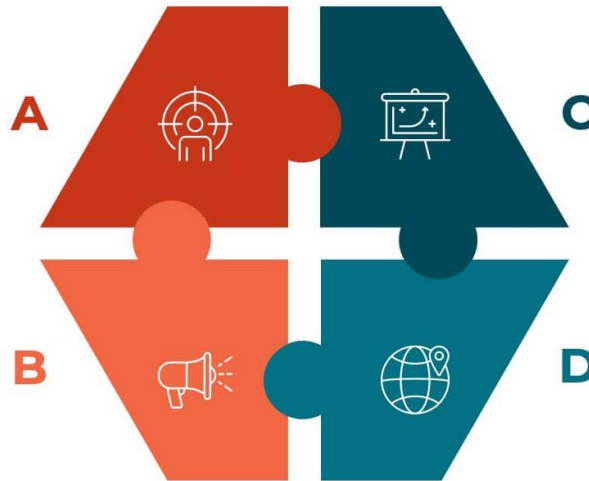
Source: study on "sustainable financing for urban Karnataka, Janagraha, 2020"

Navigating Political Economy Complexities

How CSO's can navigate through these complexities ?

Knowing drivers/Influencers

- 30+ stakeholder for Small Town WASH
- 10 Stakeholder in high influential decision making power
- Identify drivers – MLA, Bureaucrats, Local leaders etc



Financial synergies

- Effective usage of local funds
- Rural/District departments- resource sharing
- Urban Rural convergence –Co-funding
- City-Farmers partnership

Secure buy-in through demonstration

- Exposure Tangible, practical & relatable solutions helps gain interest
- Achieved through pilot , exposure visits
- Proof of concepts – Experienced unlocks interest

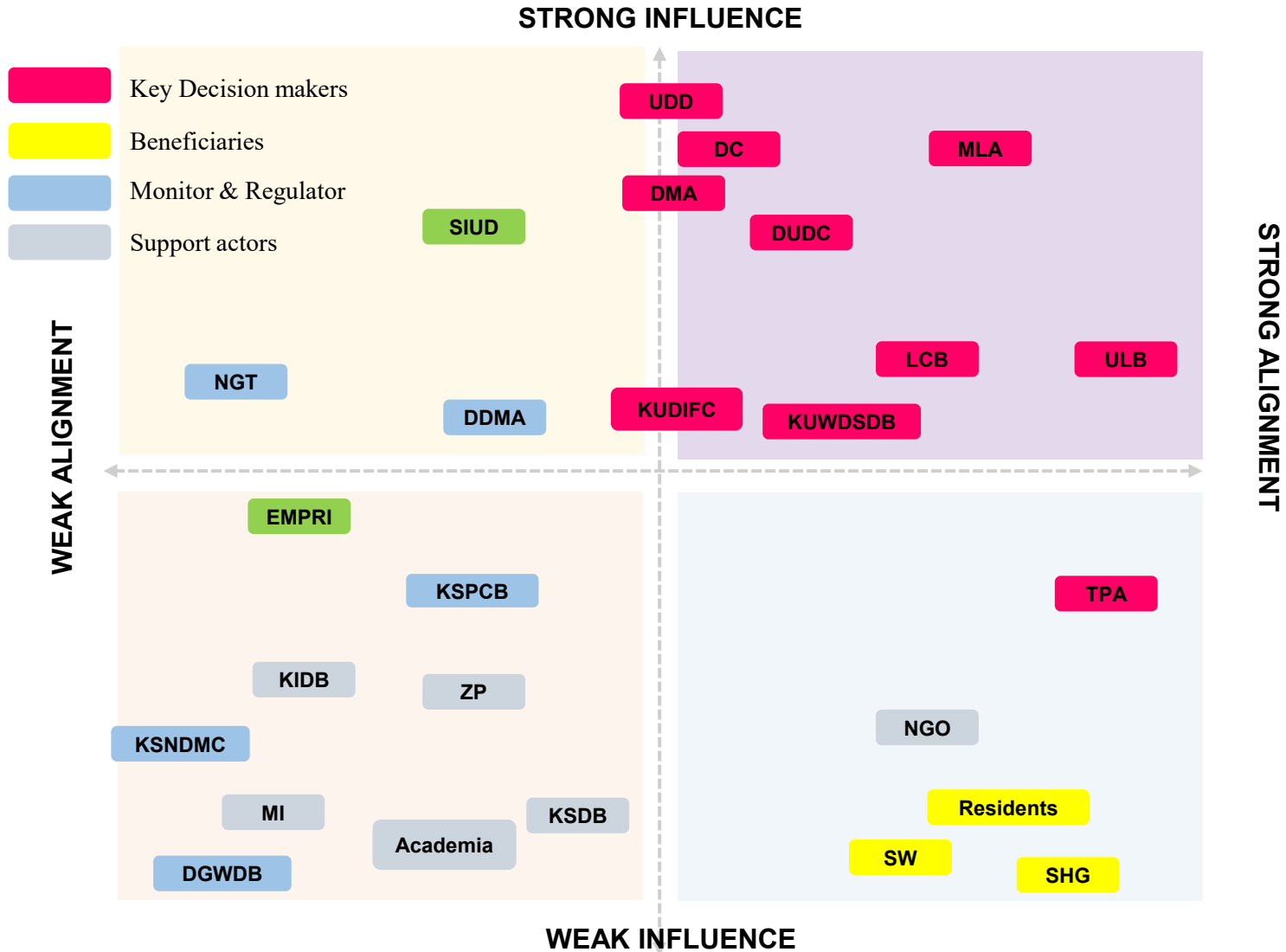
Everything else

- Iterative, flexible approach that allows for periodic re-alignment
- Linkage of actions to core mandate
- Actions alignment with municipal budget cycle
- Timebound actions linked to political or administrator tenure

The decisions are linked to;

- a) Political visibility and electoral considerations
- b) Administrative efficiency
- c) Regulatory compliance
- d) Community welfare.

Identifying key stakeholders & Influencers, Karnataka



Convergence Points:
 Agencies like KUDFC (funding), DDMA (disaster resilience), and UDD (urban policy) represent critical nodes where interest alignment will determine WASH success.

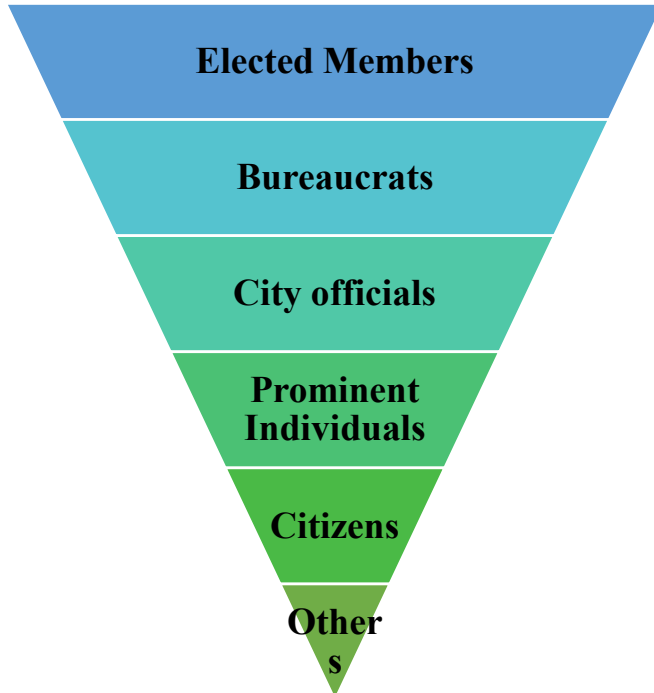
Power sits at the district, the towns remain dependent

A broad stakeholder universe (30+ actors) was mapped,

9+ key stakeholders were crucial for Climate WASH integration

Key drivers as the engine of institutionalization

Who drives decision ?



FSTP, Leh- 2020

Driver: Bureaucrat & City officials

First high altitude FSTP
Conceptualised & Built under 90 days
Approvals & compliance in Fastrack mode



Vision , Leh - 2022

Driver: Citizens & Prominent Individuals

2.0 year process- Highly consultative
Institutionalisation – Frequent follow-ups
Happy & Liveable town



24*7 Water supply

Driver: Citizens & City Officials

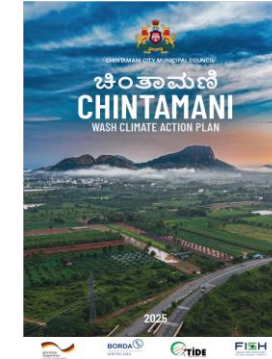
First pilot co-funded by users
Influenced city scale-up
European technology & Local Jugad



WASH Facility, Karnataka

Driver: Community & City officials

5000+ Beneficiary
State integration – Scale up across 198 ULB
State adopting WASH toolkit



FSTP, Leh- 2020

Driver: Bureaucrat & City officials

First WASH CAP for small town
Grounded & contextual approach
200+ Cr unlocked and aligned to climate goals.

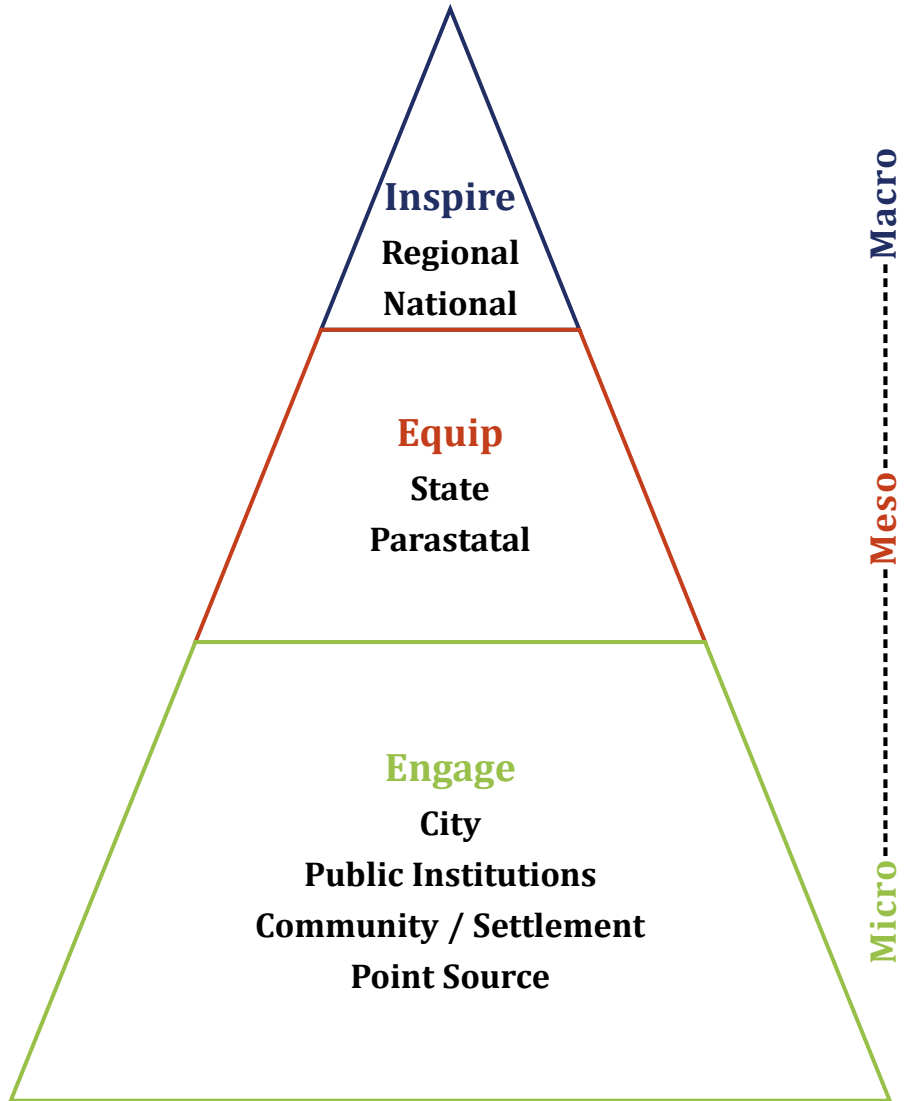


Kandawara colony, Karnataka

Driver: Community

Model decentralised circularity system
Community run operations
Nbs systems for ease of operations

Pilot demonstrations play a strategic role in influencing decisions



Founding members of NFSSM alliance.
 Formalised **Parvat Manthan** with NIUA: Alliance for policy focus on Mountain Towns in the South Asia Region with NIUA, IMI, ICIMOD, DASRA, NFSSM alliance
 Active contributor to ClimateRise and NFSSM alliance.
 Actively shared our learnings across **12 states and more than 25 cities** across the country in last 1.5 years.

On-site Sanitation: Drafted **FSM Policy**– First state FSM policy in India. **for Legacy Waste Management** through conference, contract validations, DPRs/Technical Reports.
Decentralised Water Supply in High-Altitude Region: The Gangles model led to city wide adoption in Leh town with UT’s support. It was also recognized by the PMO. **Sanitation Workers’ Professional Dignity:** WASH facility model was adopted for state wide implementation in Karnataka through WASH Facility Toolkit.
Legacy Waste Remediation: Knowledge sharing and learning support to the Govt. of Karnataka and the PMU

On-site Sanitation: India’s first FSM project in Devanahalli, Karnataka; and the first PPP-based FSM project in Leh, demonstrating scalable models for small towns. **Climate-WASH Action:** Developed India’s first Climate-Sensitive WASH Action Plan for a small town with Chintamani municipality.
Decentralised Water Supply in High-Altitude Region: Highest-altitude 24×7 water supply project in Gangles, Leh with PHED and MCL. **Sanitation Workers’ Professional Dignity:** Constructed 4 WASH facilities with ULBs in Leh and Karnataka, benefiting over 3,000 sanitation workers.
Legacy Waste Remediation: Supported legacy waste remediation in 5 towns, clearing over 100,000 MT of legacy waste across three towns.

Legacy waste management- Leh & Karnataka

Legacy Waste Management

(LWM) is emerging as a prominent issue, specially for small towns.

Total Pilots: 4 (1-Leh, 3-Karnataka)

Total waste remediated – 3.0Lakh MT

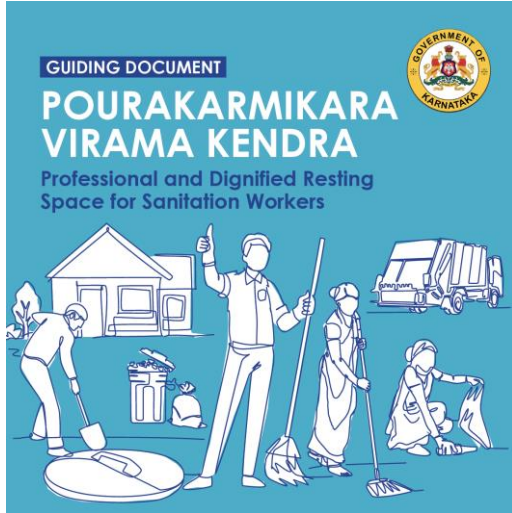
Area recovered - > 100 acres of land unlocked

State integration: Reform input

- Cluster model for small towns
- Hill city specific guidelines for waste remediation
- Forward linkages – RDF to cement industries



WASH Facility for Sanitation workers- Leh & Karnataka



Based on facilities constructed in Chikkaballapur and Chintamani, The Govt. of Karnataka adopted Pourakarmika Virama Kendra toolkit for 198 ULBs.

The facilities prioritise **inclusive, safe, and comfortable spaces**, covering bathing facilities, sanitisation areas, utilities, storage spaces, and resting zones. It emphasises on **eco-friendly practices, efficiency, and low-maintenance** features, ensuring functionality, accessibility, and sustainability.

These facilities and toolkit was enabled by training around **100** sanitation workers and municipal administrators

Beneficiaries: Around **5,000** sanitation workers and families till date



Financing strategies – Addressing the financial constraint

200+ Cr unlocked for WASH projects under WASH CAP for Chintamani through various funding sources

National & State Scheme	<ul style="list-style-type: none"> ▪ AMRUT 2.0 ▪ NGT Funds ▪ SBM 2.0 ▪ UD Funds 	<div style="background-color: #4CAF50; color: white; padding: 10px; text-align: center;"> L (123+ Cr) </div>	<ul style="list-style-type: none"> ▪ 2 Lake restoration and capacity enhancement (162 Mcft) ▪ 10 MLD STP, 40KM network upgradation ▪ 80,000 MT legacy waste remediation project ▪ 30TPD Solid waste processing infra.
Urba-Rural Convergence	<ul style="list-style-type: none"> ▪ SSDB ▪ MI ▪ RDPR 	<div style="background-color: #FF9800; color: white; padding: 10px; text-align: center;"> M (18+ Cr) </div>	<ul style="list-style-type: none"> ▪ 200 KLD greywater treatment in 2 slums ▪ 1 lake restoration & capacity Enhancement ▪ I&D for lake protection
District Funds Emergency/Monitoring	<ul style="list-style-type: none"> ▪ DDMA ▪ WRD ▪ GWD 	<div style="background-color: #D9534F; color: white; padding: 10px; text-align: center;"> S (0.3 Cr) </div>	<ul style="list-style-type: none"> ▪ 10-20 Lakh water security funds ▪ 40 defunct borewell restoration ▪ 4 ground water Monitoring stations
Other Fundings	<ul style="list-style-type: none"> ▪ Digital Twin ▪ SAM ▪ CSR/BMZ 	<div style="background-color: #D9534F; color: white; padding: 10px; text-align: center;"> S (1.2 Cr) </div>	<ul style="list-style-type: none"> ▪ Water resource monitoring ▪ 20 Shallow Aquifer recharge points ▪ Smart water supply systems ▪ Decentralised SWM

Stakeholder Need Map

UDD

Context-specific understanding of policies and schemes
Dependable data and well-defined indicators
Prompt disbursement of funds
Use of **innovative financing** mechanisms
Strengthened planning, regulatory, and monitoring **capacities**

ULB staff

Meaningful representation in planning processes
Autonomy over fund utilisation
Adequate and **skilled** human resources
Data-driven planning and monitoring based on real time information

Local elected members

Strengthened leadership and decision making capacities
Improved **integration between administrative systems and citizens**
Citizen feedback mechanisms
Greater transparency and accountability in governance processes

Support Agency

Facilitate process, no overtaking roles
Technical empowerment to ULB
Interdepartmental integration- Inclusive, resilient & sustainability

Service Providers/Contractors

Clear **accountability** mechanisms
Contextual solution
Cross departmental coordination

Civil Societies / CSRs

Inclusive city planning representation
Support for **innovation and pilot** initiatives
Optimized resource use and **reduced duplication**
Knowledge sharing and **scalable solutions**

Citizens/Collectives

Equitable and inclusive **access to services**
Improved awareness of systems, processes, and ongoing initiatives
Accountability mechanisms for **service providers & Grievance redressal** and feedback systems for users
Role clarity & work appropriateness for collectives

Thank You

WASH Economics Conference 2026

CWAS CENTER FOR WATER AND SANITATION
CRDF CEPT UNIVERSITY

CEPT UNIVERSITY
FACULTY OF PLANNING

IFS Institute for Fiscal Studies

LONDON SCHOOL OF HYGIENE & TROPICAL MEDICINE

Gates Foundation

